

**SURVEY OF RECENT GRADUATES  
RECIPIENTS OF GRADUATE DEGREES  
SUMMER 2004**

This survey is administered each semester to all recipients of graduate degrees.

**N = 284**

**Response rate = 45.2 percent**

**Respondent demographics compare favorably with Summer 2004 recipients of graduate degrees.**

**Table 1**

	Very weak competency		2		3		4		Very strong competency		Mean*	SD
	N	%	N	%	N	%	N	%	N	%		
Ability to write clearly and effectively (entering)	2	.7	15	5.3	76	26.9	90	31.8	100	35.3	3.96	.949
Ability to write clearly and effectively (exiting)	1	.4	0	.0	11	3.9	99	35.4	169	60.4	4.55	.608
Ability to speak clearly and effectively (entering)	5	1.8	17	6.0	77	27.2	103	36.4	81	28.6	3.84	.967
Ability to speak clearly and effectively (exiting)	1	.4	0	.0	19	6.8	129	45.9	132	47.0	4.39	.646
Organize and interpret data appropriately (entering)	2	.7	20	7.1	90	31.8	101	35.7	70	24.7	3.76	.925
Organize and interpret data appropriately (exiting)	1	.4	0	.0	12	4.3	121	43.1	147	52.3	4.47	.615
Ability to locate and organize information from multiple sources (entering)	2	.7	20	7.1	93	33.1	100	35.6	66	23.5	3.74	.920
Ability to locate and organize information from multiple sources (exiting)	1	.4	1	.4	14	5.1	110	39.7	151	54.5	4.48	.646
Effectively use technology (entering)	3	1.1	25	8.8	67	23.7	97	34.3	91	32.2	3.87	.997
Effectively use technology (exiting)	1	.4	1	.4	15	5.3	103	36.7	161	57.3	4.50	.650
Work effectively with others (entering)	1	.4	7	2.5	52	18.5	114	40.6	107	38.1	4.13	.827
Work effectively with others (exiting)	1	.4	1	.4	18	6.5	100	35.8	159	57.0	4.49	.668
Work effectively on your own (entering)	0	.0	4	1.4	32	11.4	113	40.4	131	46.8	4.33	.724
Work effectively on your own (exiting)	1	.4	0	.0	8	2.9	85	31.0	180	65.7	4.61	.584

\*Mean range: 1=very weak competency to 5=very strong competency  
p<.01 (all pairs)

**Table 2**

	Very weak competency		2		3		4		Very strong competency		Mean*	SD
	N	%	N	%	N	%	N	%	N	%		
Apply scientific reasoning in problem-solving (entering)	3	1.1	15	5.4	90	32.3	103	36.9	68	24.4	3.78	.914
Apply scientific reasoning in problem-solving (exiting)	2	.7	2	.7	32	11.6	111	40.4	128	46.5	4.31	.763
Ability to integrate new information with past knowledge (entering)	0	.0	12	4.3	67	24.2	124	44.8	74	26.7	3.94	.828
Ability to integrate new information with past knowledge (exiting)	1	.4	0	.0	19	6.9	105	38.2	150	54.5	4.46	.659
Ability to analyze quantitative problems (entering)	2	.7	24	8.6	76	27.2	114	40.9	63	22.6	3.75	.925
Ability to analyze quantitative problems (exiting)	1	.4	4	1.5	29	10.5	115	41.8	126	45.8	4.31	.748
Ability to analyze problems from different points of view (entering)	2	.7	13	4.6	69	24.6	133	47.3	64	22.8	3.87	.841
Ability to analyze problems from different points of view (exiting)	1	.4	1	.4	14	5.0	125	44.8	138	49.5	4.43	.642
Ability to set goals, prioritize tasks, and meet deadlines (entering)	0	.0	14	5.0	50	17.8	121	43.1	96	34.2	4.06	.846
Ability to set goals, prioritize tasks, and meet deadlines (exiting)	1	.4	1	.4	16	5.7	89	31.9	172	61.6	4.54	.655
Get along with people of other racial/ethnic backgrounds (entering)	1	.4	7	2.5	39	13.8	93	33.0	142	50.4	4.30	.827
Get along with people of other racial/ethnic backgrounds (exiting)	1	.4	1	.4	15	5.4	85	30.4	178	63.6	4.56	.647
Understanding of values and ethical standards (entering)	2	.7	2	.7	34	12.0	113	39.9	132	46.6	4.30	.766
Understanding of values and ethical standards (exiting)	1	.4	0	.0	15	5.4	83	29.7	180	64.5	4.58	.629

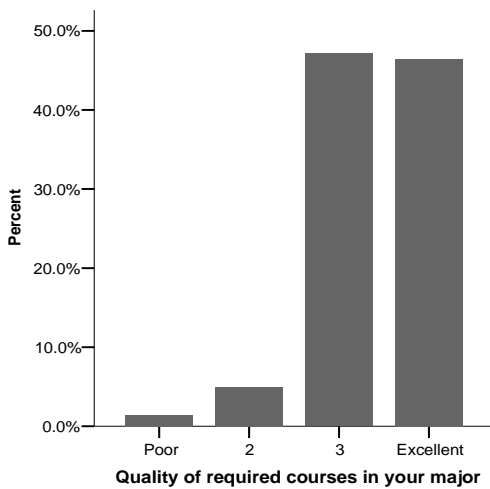
\*Mean range: 1=very weak competency to 5=very strong competency  
p<.01 (all pairs)

**Table 3**

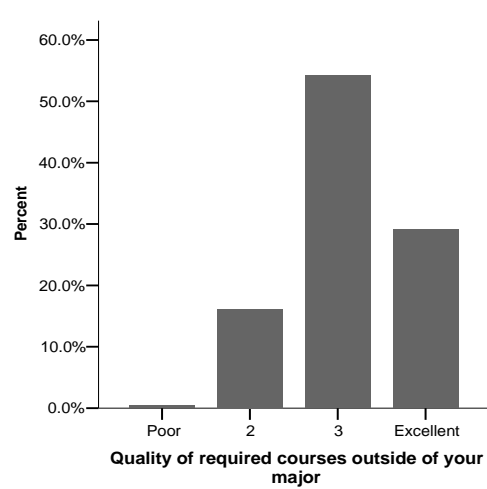
	Poor		2		3		Excellent		Not applicable		Mean*	SD
	N	%	N	%	N	%	N	%	N	%		
Quality of required courses in your major	4	1.4	14	4.9	133	46.8	131	46.1	2	.7	3.39	.650
Quality of required courses outside of your major	1	.4	36	12.7	121	42.8	65	23.0	60	21.2	3.12	.677
Quality of elected courses	1	.4	17	6.0	124	43.8	98	34.6	43	15.2	3.33	.624
Availability of courses in your major program	8	2.8	52	18.3	114	40.1	101	35.6	9	3.2	3.12	.813
Quality of instruction in your major program	5	1.8	16	5.7	123	43.6	136	48.2	2	.7	3.39	.679
Interaction with faculty in your major program	2	.7	42	14.8	102	36.0	134	47.3	3	1.1	3.31	.749
Scholarly competency of faculty in your major program	4	1.4	17	6.0	82	29.1	175	62.1	4	1.4	3.54	.677
Academic support services	15	5.5	31	11.3	81	29.5	27	9.8	121	44.0	2.78	.850
Academic advising in your major department	27	9.6	61	21.7	73	26.0	78	27.8	42	14.9	2.85	1.007
Academic advising in your college	31	11.0	53	18.8	77	27.3	51	18.1	70	24.8	2.70	.994
Academic advising from Student Advisement Center	26	9.2	42	14.9	45	16.0	16	5.7	153	54.3	2.40	.947

\*Mean range: 1=poor to 5=excellent. Not applicable excluded from analysis.

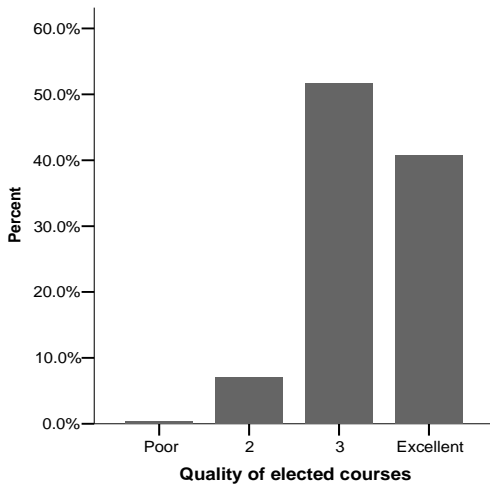
**Graph 1**



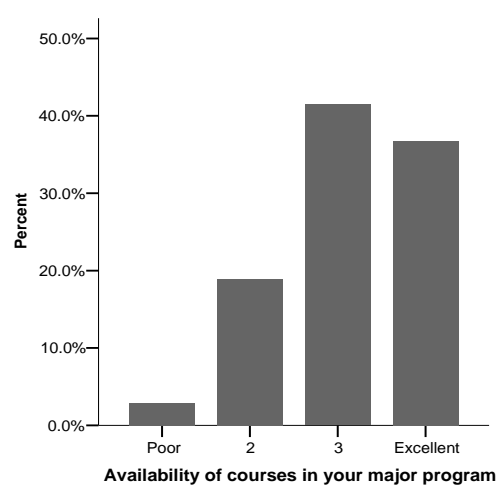
**Graph 2**



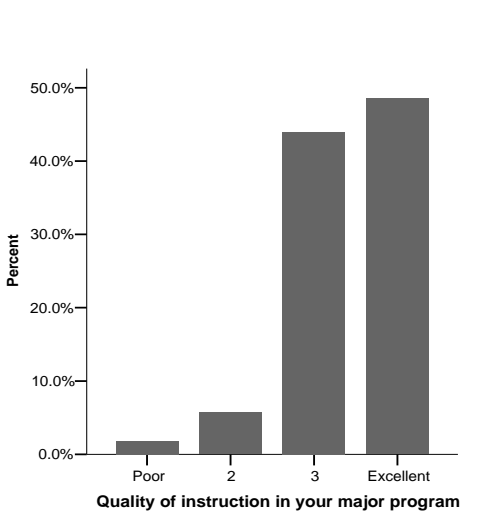
**Graph 3**



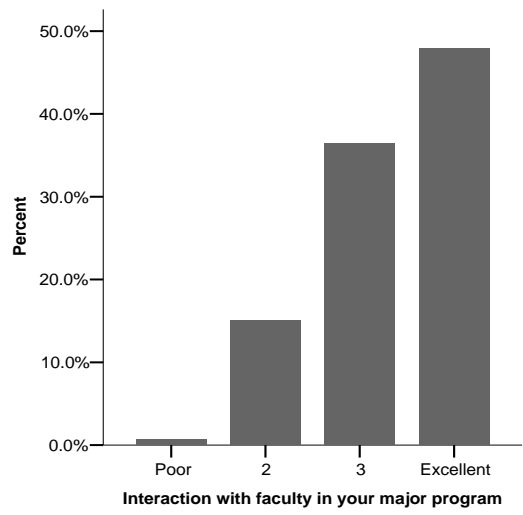
**Graph 4**



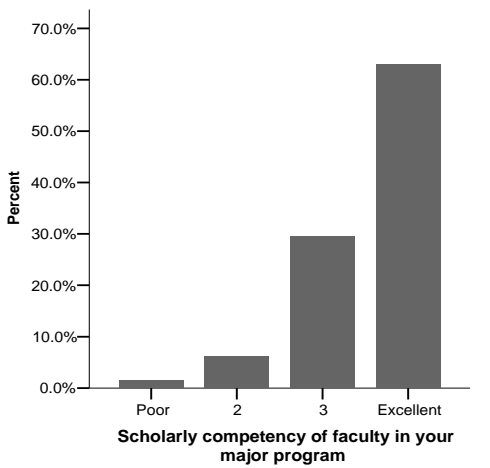
**Graph 5**



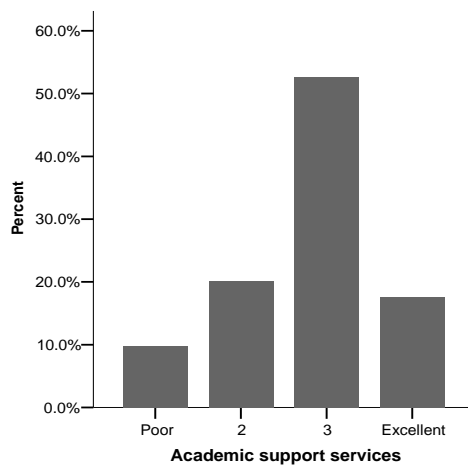
**Graph 6**



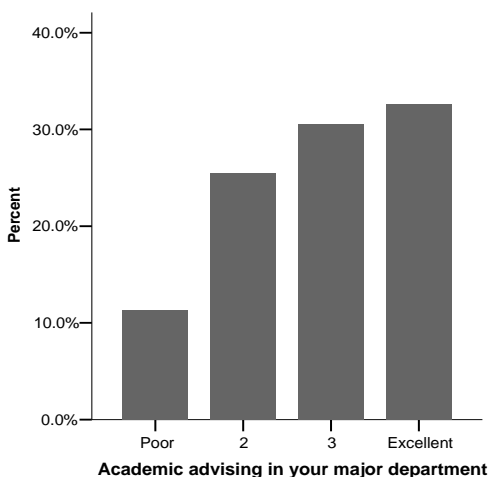
**Graph 7**



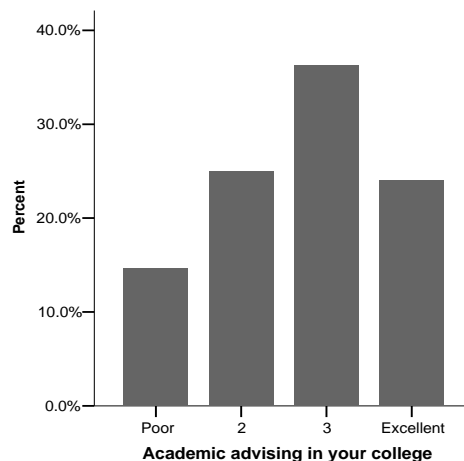
**Graph 8**



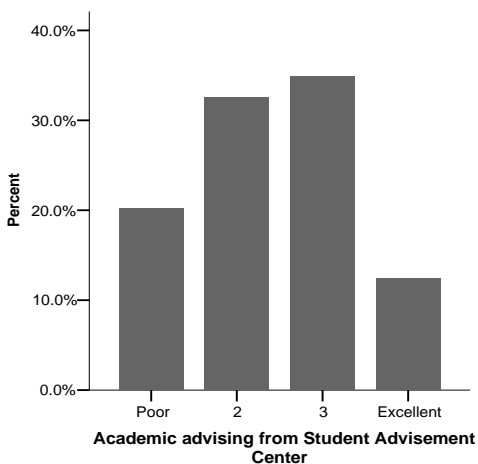
**Graph 9**



**Graph 10**



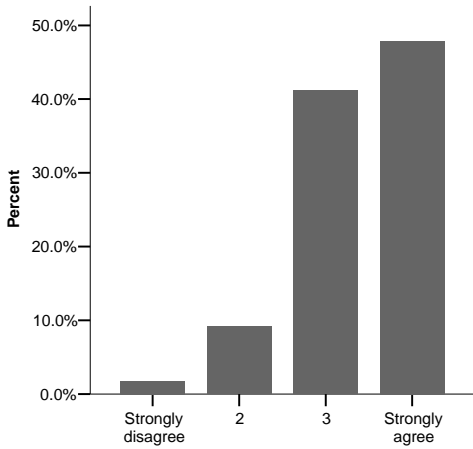
**Graph 11**



**Table 4**

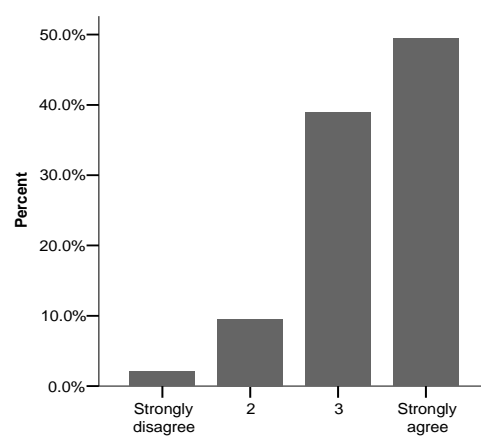
	Strongly disagree		2		3		Strongly agree		Mean*	SD
	N	%	N	%	N	%	N	%		
Faculty members were genuinely interested in my academic success.	5	1.8	26	9.2	117	41.2	136	47.9	3.35	.720
My academic program has prepared me for advanced study.	6	2.1	27	9.5	110	38.9	140	49.5	3.36	.741
My academic program provided good preparation for my career.	7	2.5	32	11.3	102	35.9	143	50.4	3.34	.775
For the courses I took, the instructors stressed high quality work from students.	8	2.8	27	9.5	122	43.0	127	44.7	3.30	.755
I would recommend GSU to a close friend or relative.	12	4.3	28	9.9	99	35.1	143	50.7	3.32	.821

**Graph 12**



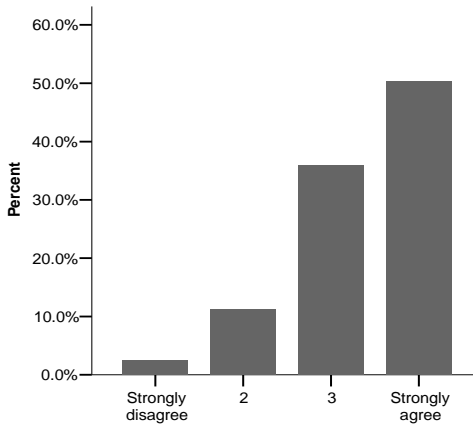
**Faculty members were genuinely interested in my academic success.**

**Graph 13**



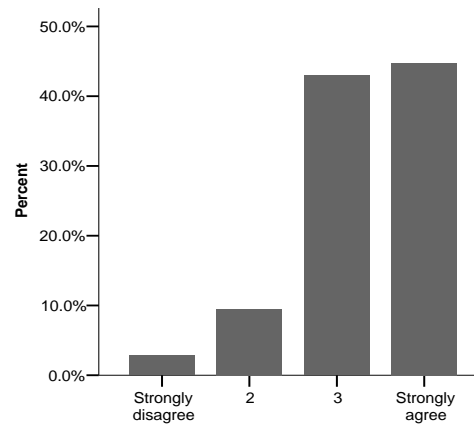
**My academic program has prepared me for advanced study.**

**Graph 14**



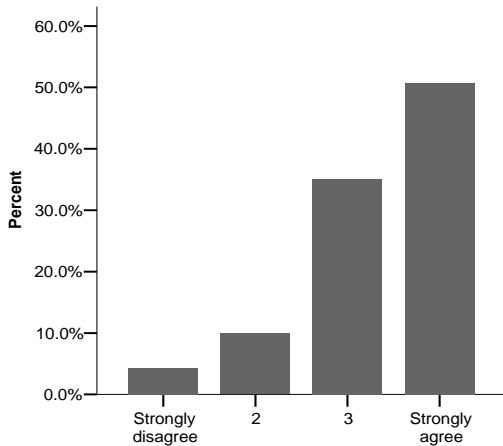
**My academic program provided good preparation for my career.**

**Graph 15**



**For the courses I took, the instructors stressed high quality work from students.**

**Graph 16**



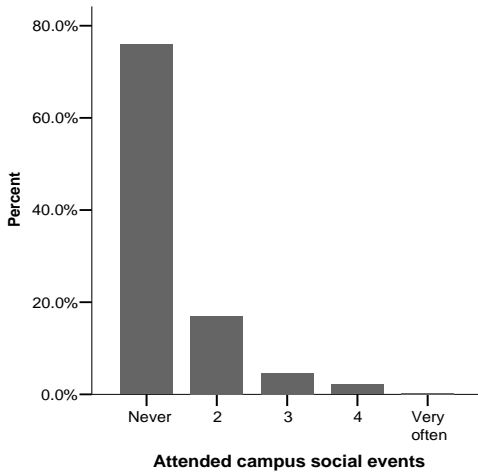
**I would recommend GSU to a close friend or relative.**

**Table 5**

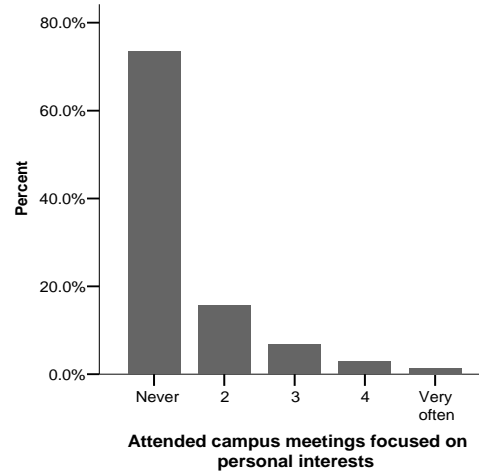
	Never		2		3		4		Very often		Mean	SD
	N	%	N	%	N	%	N	%	N	%		
Attended campus social events	215	76.0	48	17.0	13	4.6	6	2.1	1	.4	1.34	.698
Attended campus meetings focused on personal interests	207	73.4	44	15.6	19	6.7	8	2.8	4	1.4	1.43	.850
Attended campus meetings focused on professional interests	128	45.4	67	23.8	50	17.7	30	10.6	7	2.5	2.01	1.133
Attended athletic events at GSU	247	87.9	23	8.2	6	2.1	3	1.1	2	.7	1.19	.587
Worked with faculty members on activities other than coursework	174	61.9	44	15.7	32	11.4	19	6.8	12	4.3	1.76	1.155
Utilized the Student Recreation Center facilities	160	56.7	38	13.5	36	12.8	27	9.6	21	7.4	1.98	1.324

\* Mean range: 1=never to 5=very often

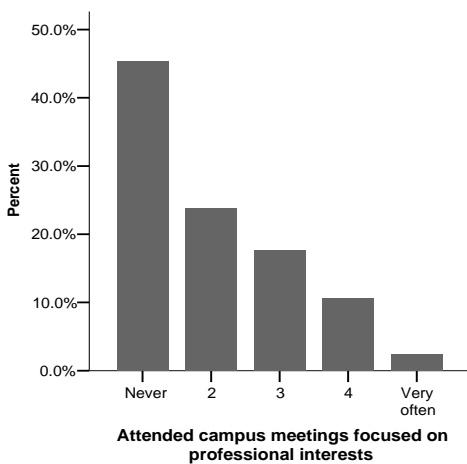
**Graph 17**



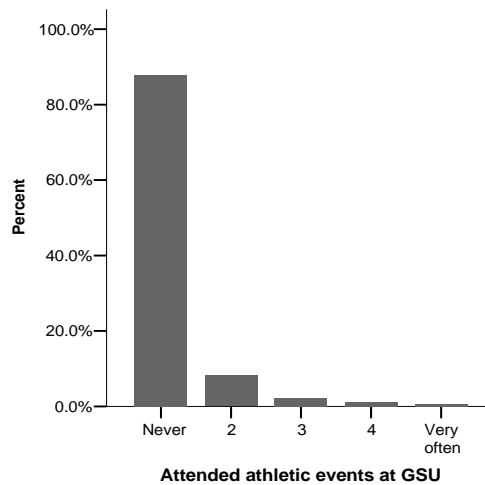
**Graph 18**



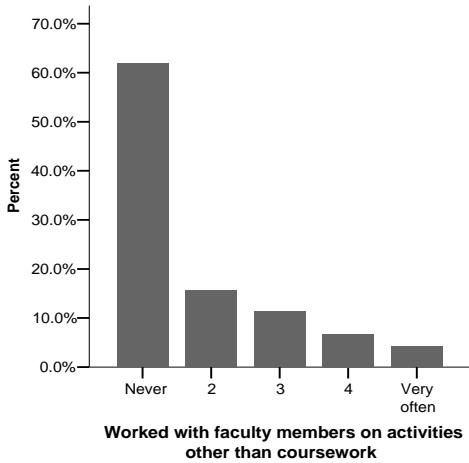
**Graph 19**



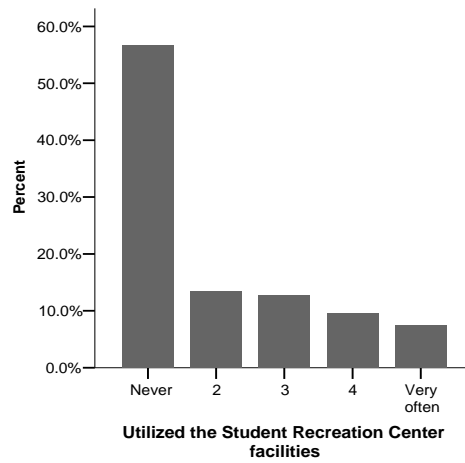
**Graph 20**



**Graph 21**



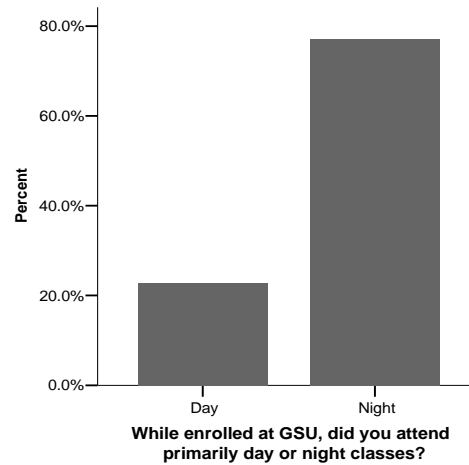
**Graph 22**



**Table 6**

		N	%
While enrolled at GSU, did you attend primarily day or night classes?	Day	63	22.8
	Night	213	77.2

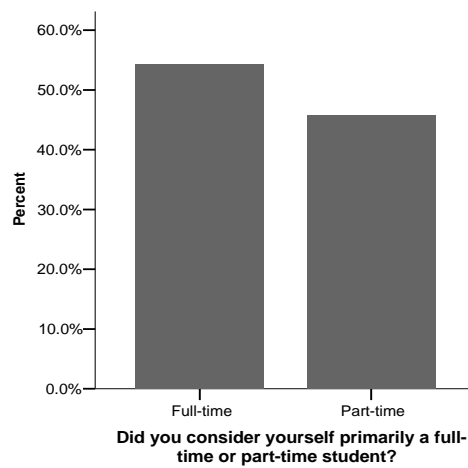
**Graph 23**



**Table 7**

		N	%
Did you consider yourself primarily a full-time or part-time student?	Full-time	153	54.3
	Part-time	129	45.7

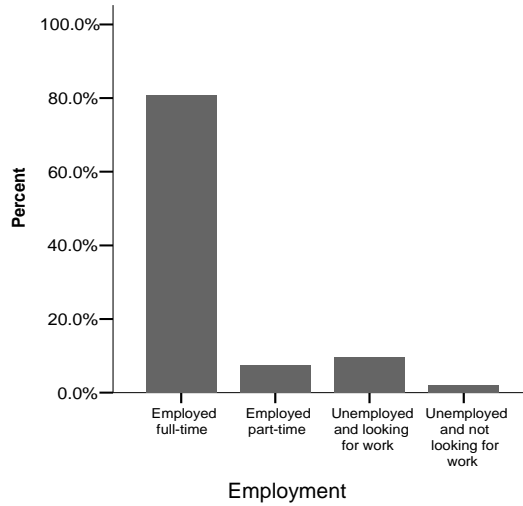
**Graph 24**



**Table 8**

Employment	N	%
Employed full-time	227	80.8
Employed part-time	21	7.5
Unemployed and looking for work	27	9.6
Unemployed and not looking for work	6	2.1

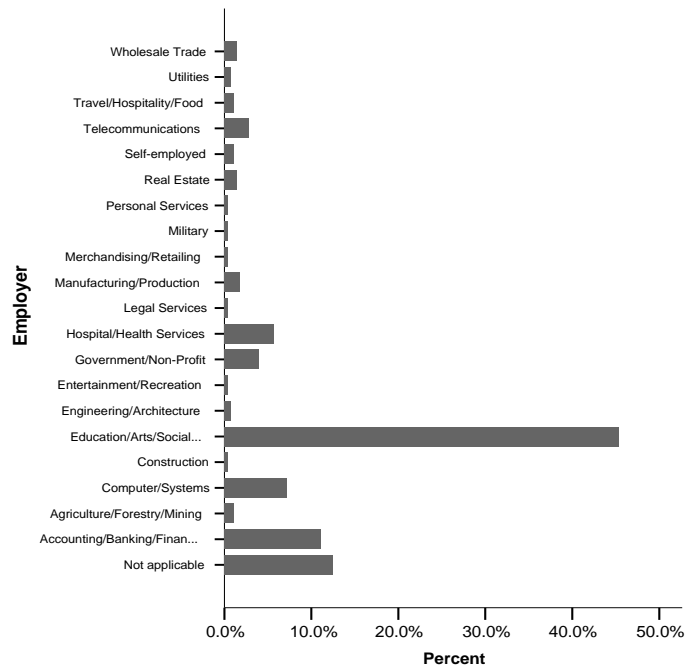
**Graph 25**



**Table 9**

Employer	N	%
Not applicable	35	12.5
Accounting/Banking/Finance/Insurance	31	11.1
Agriculture/Forestry/Mining	3	1.1
Computer/Systems	20	7.1
Construction	1	.4
Education/Arts/Social Services	127	45.4
Engineering/Architecture	2	.7
Entertainment/Recreation	1	.4
Government/Non-Profit	11	3.9
Hospital/Health Services	16	5.7
Legal Services	1	.4
Manufacturing/Production	5	1.8
Merchandising/Retailing	1	.4
Military	1	.4
Personal Services	1	.4
Real Estate	4	1.4
Self-employed	3	1.1
Telecommunications	8	2.9
Travel/Hospitality/Food	3	1.1
Utilities	2	.7
Wholesale Trade	4	1.4

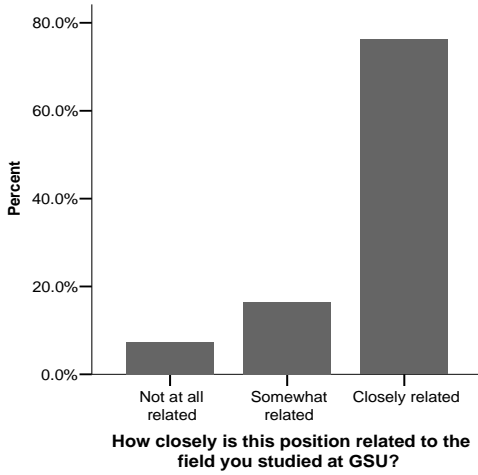
**Graph 26**



**Table 10**

		N	%
How closely is this position related to the field you studied at GSU?	Not at all related	18	7.4
	Somewhat related	40	16.4
	Closely related	186	76.2

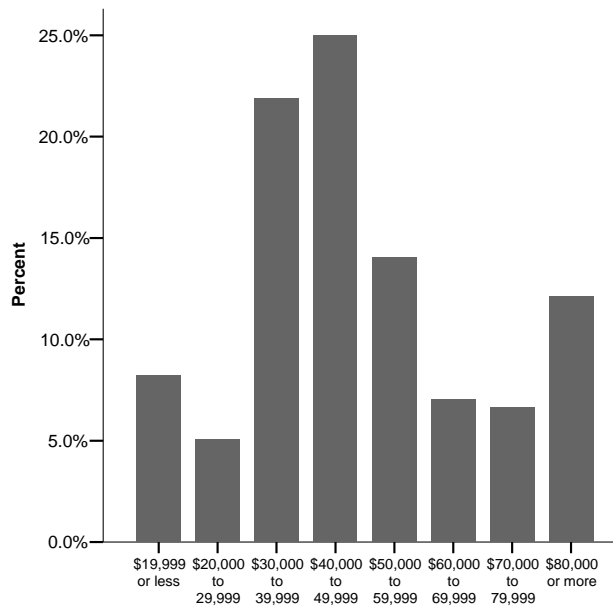
**Graph 27**



**Table 11**

Annual salary	N	%
\$19,999 or less	21	8.2
\$20,000 to 29,999	13	5.1
\$30,000 to 39,999	56	21.9
\$40,000 to 49,999	64	25.0
\$50,000 to 59,999	36	14.1
\$60,000 to 69,999	18	7.0
\$70,000 to 79,999	17	6.6
\$80,000 or more	31	12.1

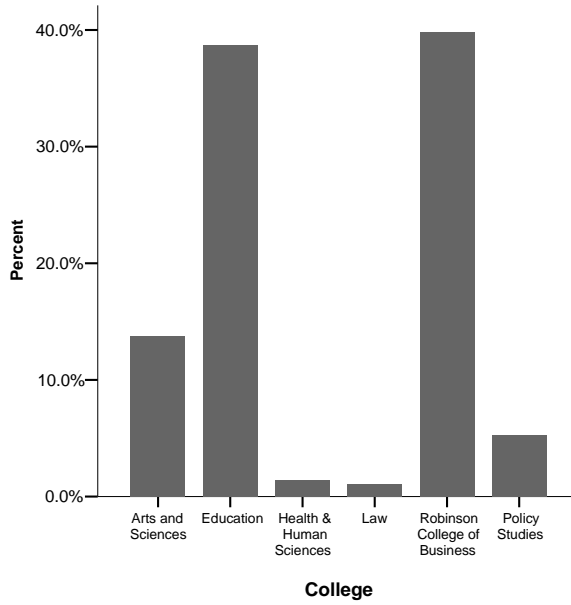
**Graph 28**



**Table 12**

College	N	%
Arts and Sciences	39	13.7
Education	110	38.7
Health & Human Sciences	4	1.4
Law	3	1.1
Robinson College of Business	113	39.8
Policy Studies	15	5.3

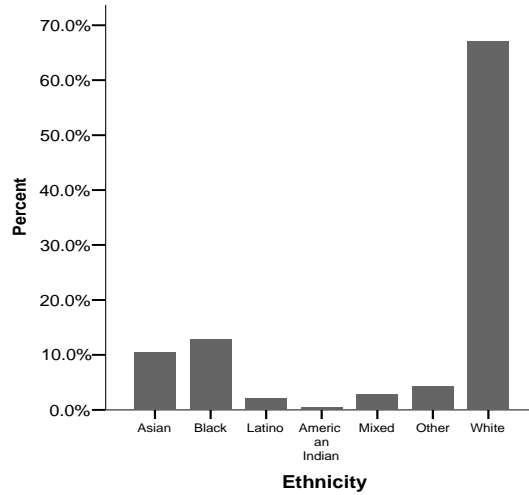
**Graph 29**



**Table 13**

Ethnicity	N	%
Asian	29	10.4
Black	36	12.9
Latino	6	2.2
American Indian	1	.4
Mixed	8	2.9
Other	12	4.3
White	187	67.0

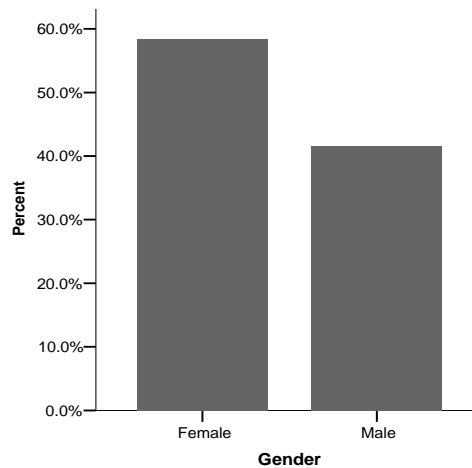
**Graph 30**



**Table 14**

Gender	N	%
Female	166	58.5
Male	118	41.5

**Graph 31**



**Table 15**

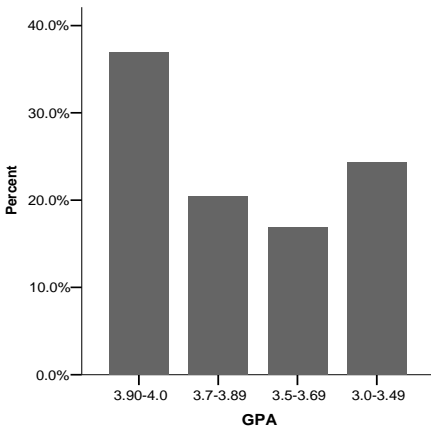
Degree	N	%
EDS	9	3.2
JD	3	1.1
MA	18	6.3
MAS	2	.7
MBA	71	25.0
MED	65	22.9
MFA	3	1.1
MGA	5	1.8
MHA	2	.7
MLM	11	3.9
MPA	5	1.8
MS	60	21.1
MSRE	3	1.1
MTX	6	2.1
PHD	21	7.4

**Table 16**

GPA	N	%
3.90-4.0	105	37.0
3.7-3.89	58	20.4
3.5-3.69	48	16.9
3.0-3.49	69	24.3
2.5-2.99	0	.0
2.0-2.49	0	.0
below 2.0	0	.0
Not applicable*	4	1.4
Mean	3.69	

\*Different grading scale used

**Graph 32**



**Table 17**

Citizenship	N	%
United States Citizen	249	87.7
Non-resident alien	26	9.2
Resident alien	9	3.2

**Graph 33**

