

**FACULTY TECHNOLOGY SURVEY  
FALL 2004**

**N = 335**

**Response rate = 29.4 percent**

**Sample demographics compare favorably with university demographics.**

**If you were teaching in classrooms with wireless connectivity and every student had use of a laptop in the classroom, how likely is it that you would have students learning or being assessed in the following way?**

**Table 1**

	Not at all likely		2		3		4		Very likely		Not applicable		Total	Mean*	SD
	N	%	N	%	N	%	N	%	N	%	N	%			
Learning from or developing multimedia objects	87	26.1	33	9.9	41	12.3	49	14.7	101	30.3	22	6.6	333	3.14	1.634
Using a word processor to write or revise text	55	16.5	34	10.2	45	13.5	42	12.6	146	43.7	12	3.6	334	3.59	1.547
Preparing presentations with software	52	15.7	30	9.0	33	9.9	56	16.9	149	44.9	12	3.6	332	3.69	1.522
Developing and using spreadsheet models	103	30.9	45	13.5	41	12.3	46	13.8	62	18.6	36	10.8	333	2.73	1.569
Querying/developing database applications	102	30.7	37	11.1	57	17.2	58	17.5	40	12.0	38	11.4	332	2.65	1.463
Developing and using graphical models	96	29.2	41	12.5	55	16.7	44	13.4	61	18.5	32	9.7	329	2.77	1.535
Collaborating electronically with other students	57	17.3	24	7.3	55	16.7	67	20.3	116	35.2	11	3.3	330	3.50	1.486
Developing web pages and sites	103	31.3	44	13.4	56	17.0	38	11.6	60	18.2	28	8.5	329	2.69	1.534
Searching for information from digital sources and evaluating it	40	12.0	23	6.9	36	10.8	62	18.7	156	47.0	15	4.5	332	3.85	1.420
Inducing/deducing model behavior, e.g. from digital situations	113	34.2	49	14.8	52	15.8	36	10.9	37	11.2	43	13.0	330	2.43	1.436
Analyzing qualitative or quantitative data	56	17.0	33	10.0	41	12.4	55	16.7	117	35.5	28	8.5	330	3.48	1.537
Using features of learning management systems, e.g., WebCT/Vista	50	15.1	26	7.8	48	14.5	58	17.5	135	40.7	15	4.5	332	3.64	1.483
Participating in virtual sessions with others, e.g., ElluminateLive (vClass)	104	31.4	50	15.1	53	16.0	49	14.8	44	13.3	31	9.4	331	2.60	1.466
Sending and receiving files through email	47	14.1	18	5.4	38	11.4	40	12.0	178	53.5	12	3.6	333	3.88	1.486

\*Range: 1=not at all likely to 5=very likely. Not applicable excluded from analysis.

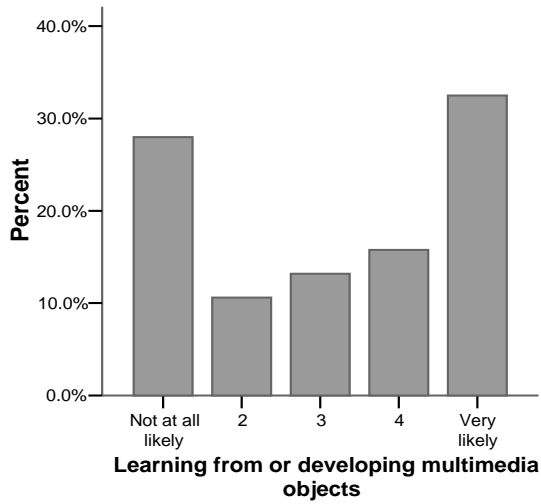
**If you were teaching in classrooms with wireless connectivity and every student had use of a laptop in the classroom, how likely is it that you would have students learning or being assessed with the following applications in the classroom?**

**Table 2**

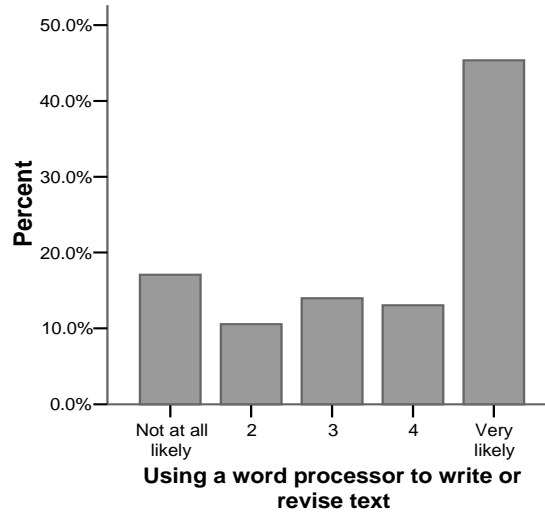
	Not at all likely		2		3		4		Very likely		Not applicable		Total	Mean*	SD
	N	%	N	%	N	%	N	%	N	%	N	%			
Writing/presentation software, e.g., Word/PowerPoint	50	15.1	22	6.6	34	10.2	59	17.8	158	47.6	9	2.7	332	3.78	1.490
Spreadsheet programs, e.g., Excel	86	26.3	43	13.1	44	13.5	46	14.1	75	22.9	33	10.1	327	2.94	1.580
Database systems, e.g., Access, Oracle	137	41.5	53	16.1	49	14.8	24	7.3	22	6.7	45	13.6	330	2.09	1.297
Statistical packages, e.g., SPSS, SAS	113	34.3	41	12.5	36	10.9	40	12.2	57	17.3	42	12.8	329	2.61	1.583
Bibliographic software, e.g., Endnote	105	32.0	34	10.4	65	19.8	46	14.0	56	17.1	22	6.7	328	2.72	1.515
Email	60	18.2	22	6.7	42	12.7	44	13.3	152	46.1	10	3.0	330	3.64	1.565
Listservs or discussion boards	64	19.4	39	11.8	43	13.0	58	17.6	112	33.9	14	4.2	330	3.36	1.552
Internet	28	8.5	13	3.9	29	8.8	47	14.2	200	60.6	13	3.9	330	4.19	1.284
Learning management systems, e.g., WebCT/Vista	58	17.7	32	9.8	43	13.1	51	15.6	132	40.4	11	3.4	327	3.53	1.548
Website development tools, e.g., Dreamweaver, Java	128	39.0	45	13.7	54	16.5	30	9.1	43	13.1	28	8.5	328	2.38	1.469
Desktop publishing	127	38.3	52	15.7	61	18.4	26	7.8	40	12.0	26	7.8	332	2.35	1.420
Graphical or multimedia software	101	30.7	45	13.7	52	15.8	50	15.2	57	17.3	24	7.3	329	2.73	1.522
Virtual classroom systems, e.g., ElluminateLive (vClass)	129	39.3	54	16.5	50	15.2	26	7.9	37	11.3	32	9.8	328	2.28	1.417

\*Range: 1=not at all likely to 5=very likely. Not applicable excluded from analysis.

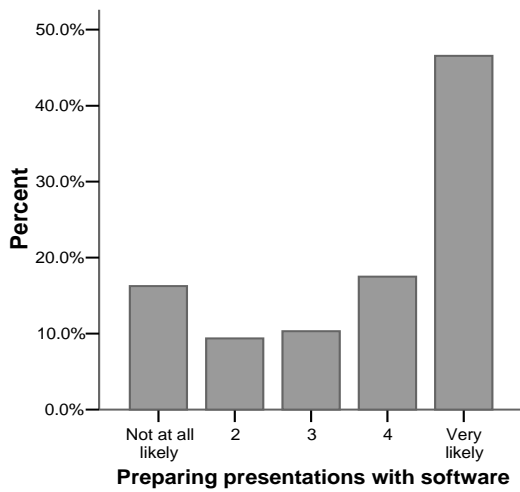
**Graph 1**



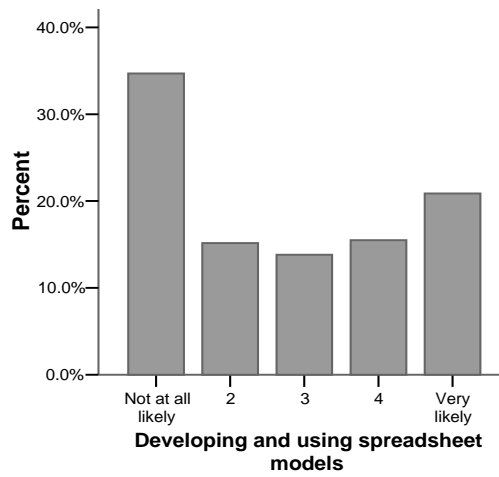
**Graph 2**



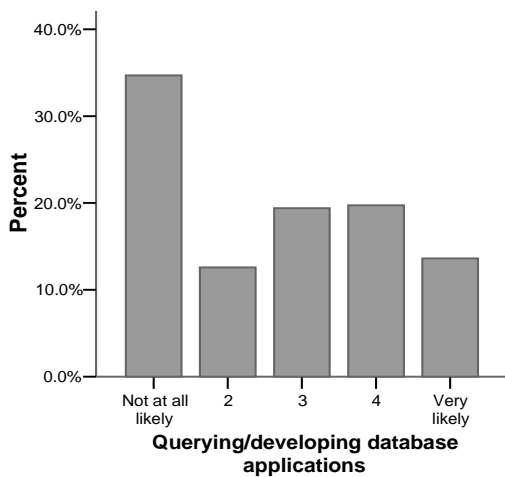
**Graph 3**



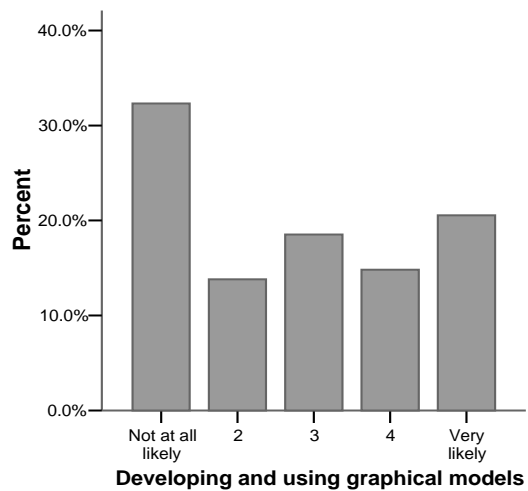
**Graph 4**



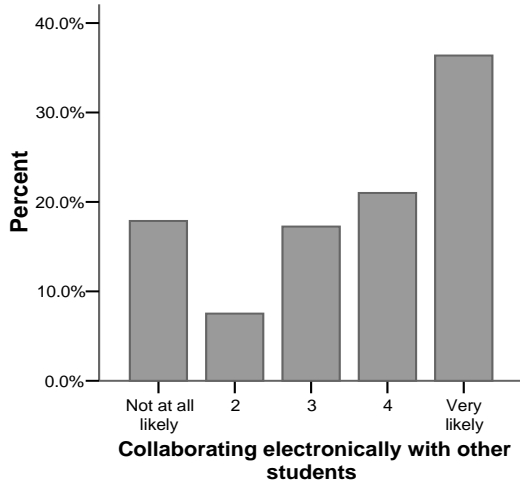
**Graph 5**



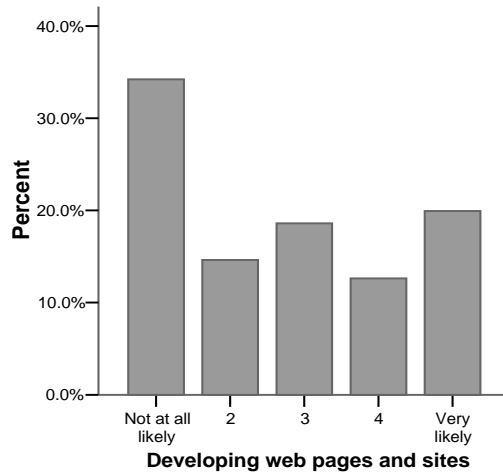
**Graph 6**



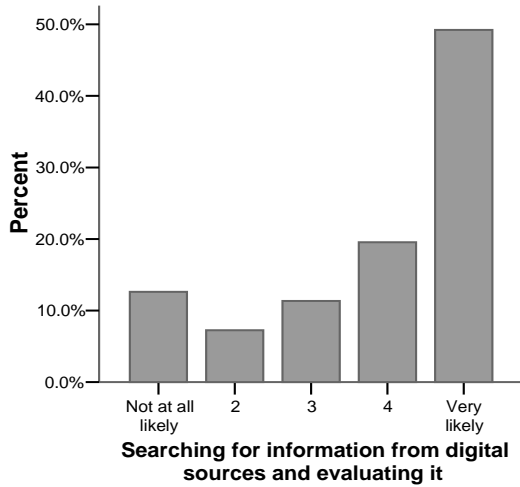
**Graph 7**



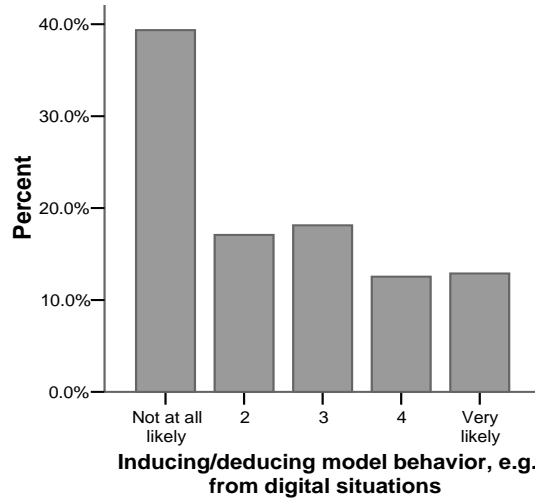
**Graph 8**



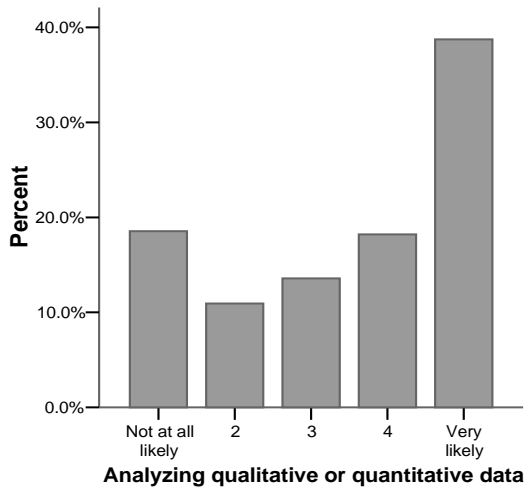
**Graph 9**



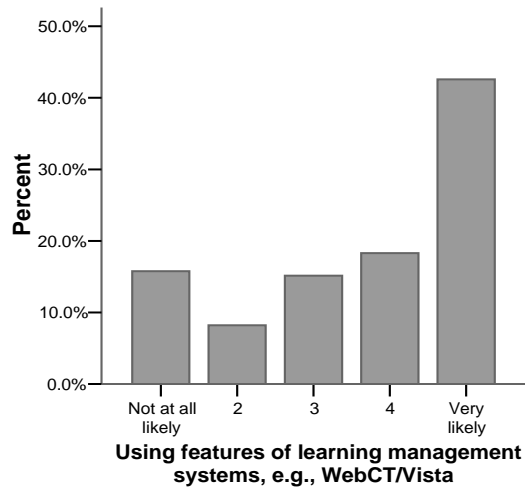
**Graph 10**



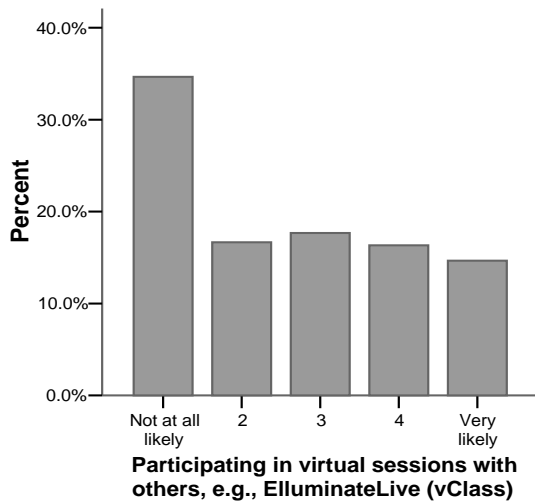
**Graph 11**



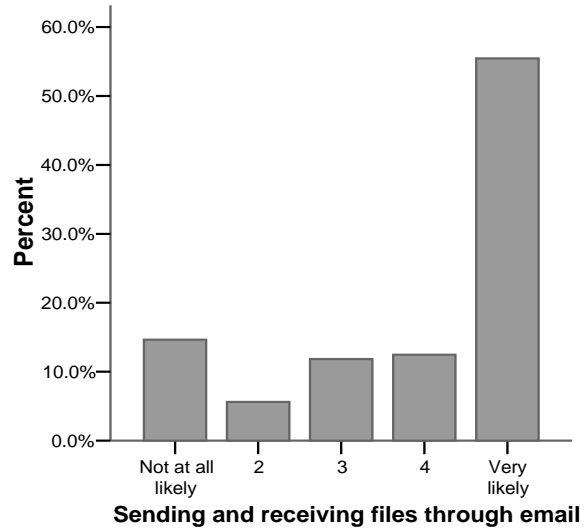
**Graph 12**



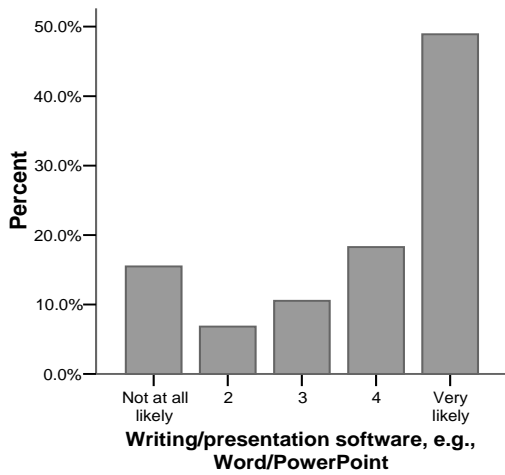
**Graph 13**



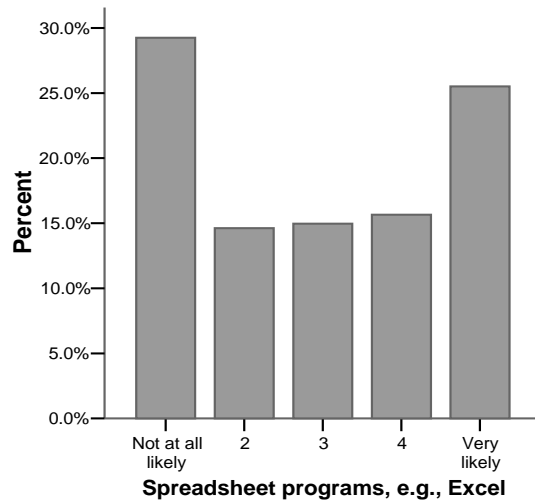
**Graph 14**



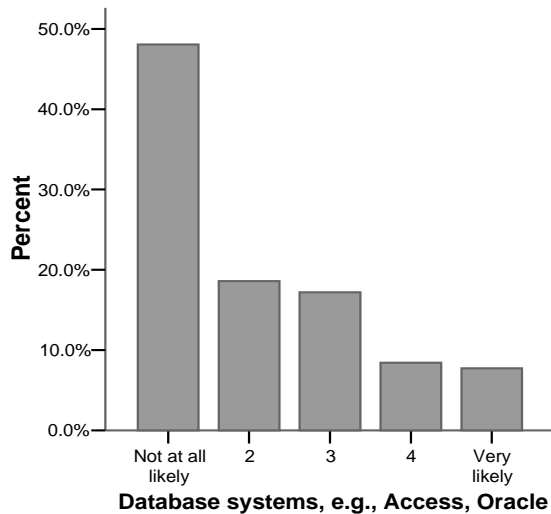
**Graph 15**



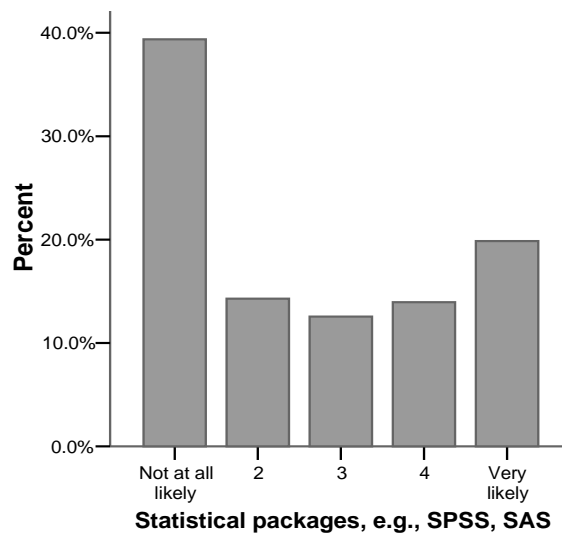
**Graph 16**



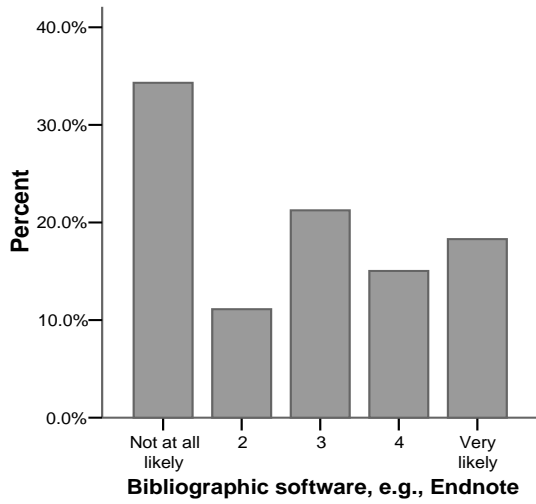
**Graph 17**



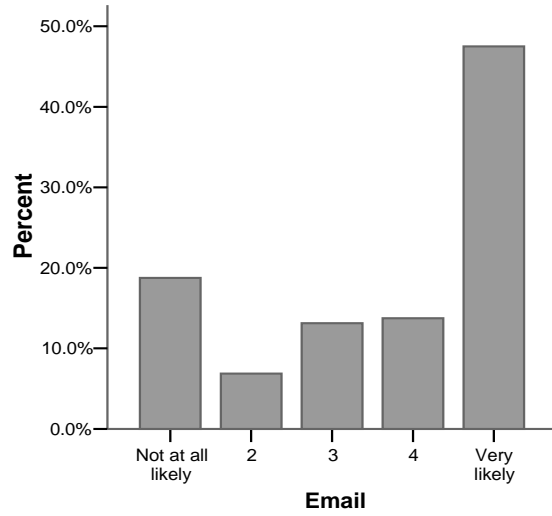
**Graph 18**



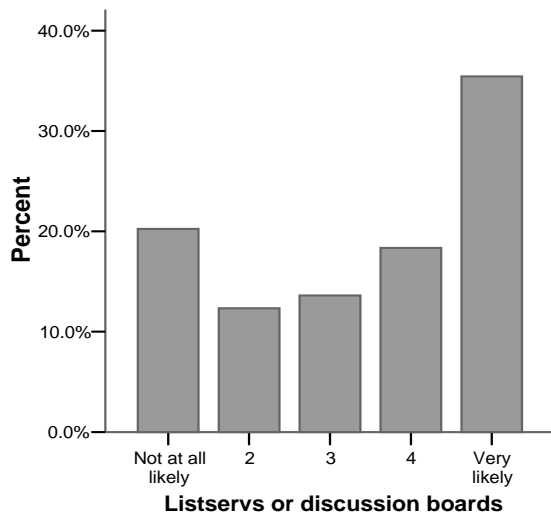
**Graph 19**



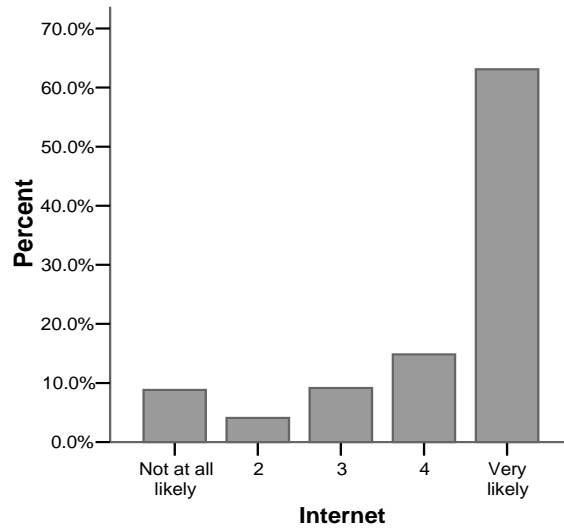
**Graph 20**



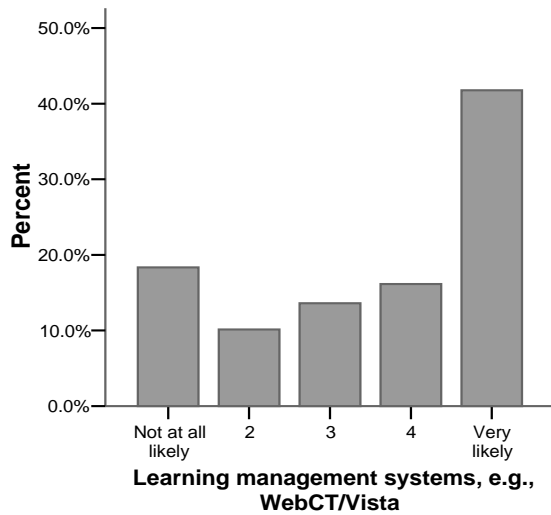
**Graph 21**



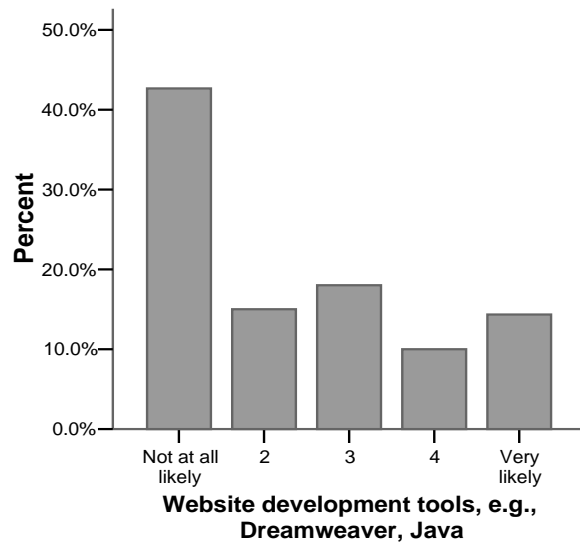
**Graph 22**



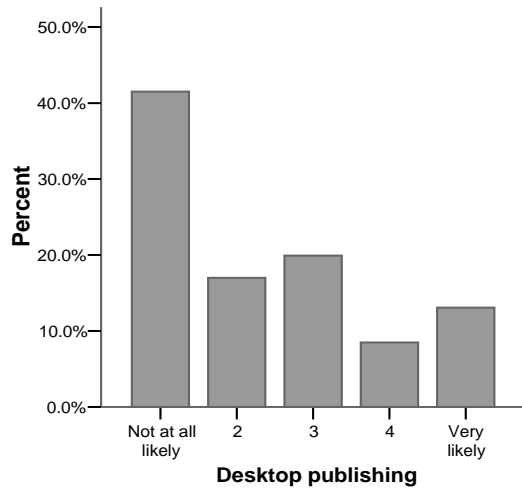
**Graph 23**



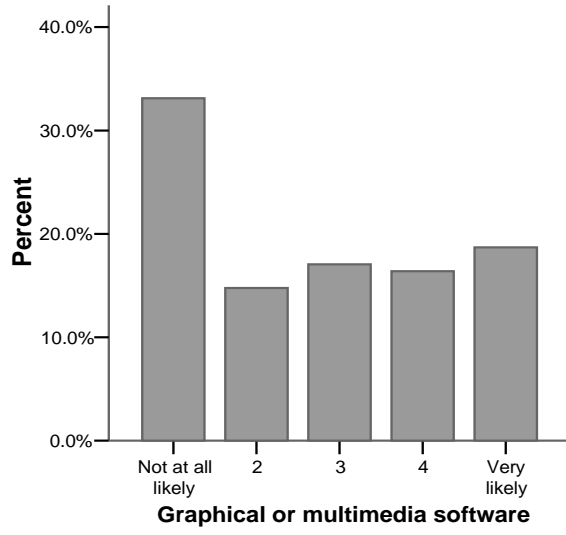
**Graph 24**



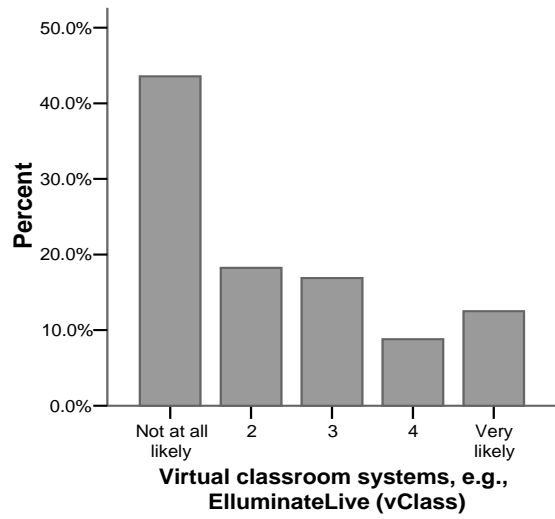
**Graph 25**



**Graph 26**



**Graph 27**



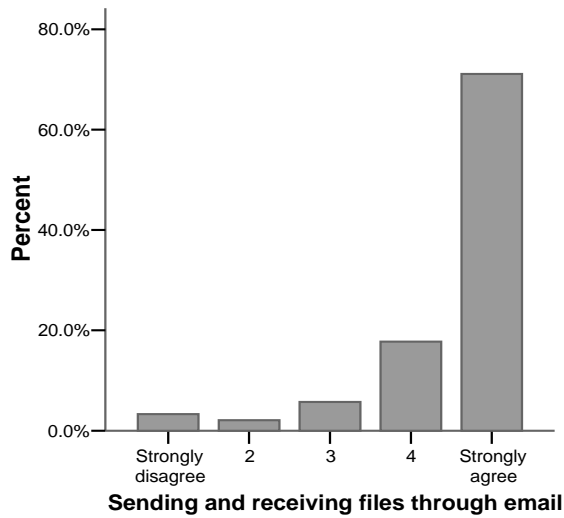
**I have the necessary technical skills to utilize laptops/wireless technology for the following student learning or assessment tasks in my classrooms.**

**Table 3**

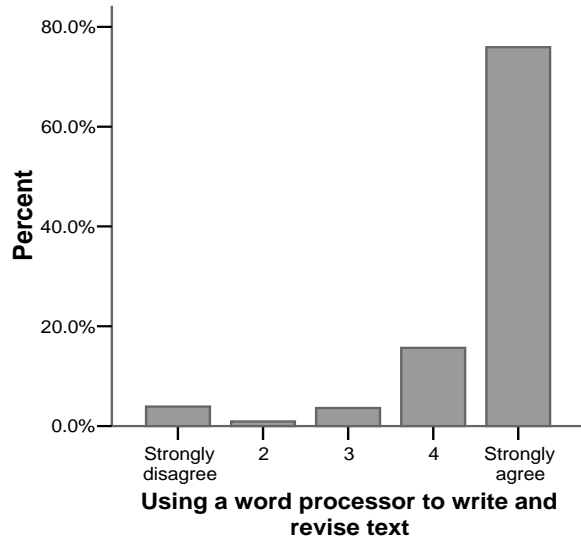
	Strongly disagree		2		3		4		Strongly agree		Total N	Mean*	SD
	N	%	N	%	N	%	N	%	N	%			
Sending and receiving files through email	11	3.3	7	2.1	19	5.7	59	17.8	236	71.1	332	4.51	.944
Using a word processor to write and revise text	13	3.9	3	.9	12	3.6	52	15.7	252	75.9	332	4.59	.917
Preparing presentations with software	25	7.6	17	5.2	36	10.9	73	22.1	179	54.2	330	4.10	1.238
Developing and using spreadsheet models	63	19.1	50	15.2	63	19.1	55	16.7	98	29.8	329	3.23	1.494
Querying/developing database applications	98	29.6	75	22.7	63	19.0	45	13.6	50	15.1	331	2.62	1.419
Developing and using graphical models	116	35.2	64	19.4	50	15.2	49	14.8	51	15.5	330	2.56	1.477
Facilitating electronic collaboration among students	46	13.9	46	13.9	77	23.3	71	21.5	90	27.3	330	3.34	1.375
Developing web pages and sites	115	35.0	75	22.8	60	18.2	35	10.6	44	13.4	329	2.45	1.403
Searching for information from digital sources and evaluating it	34	10.3	14	4.3	46	14.0	91	27.7	144	43.8	329	3.90	1.294
Inducing/deducing model behavior, e.g., from digital simulations	139	42.4	57	17.4	50	15.2	39	11.9	43	13.1	328	2.36	1.452
Analyzing qualitative or quantitative data	40	12.2	26	7.9	53	16.1	75	22.8	135	41.0	329	3.73	1.383
Using features of learning management systems, e.g., WebCT/Vista	69	21.2	42	12.9	64	19.7	71	21.8	79	24.3	325	3.15	1.467
Participating in virtual sessions with others, e.g., ElluminateLIVE (vClass)	170	51.7	67	20.4	44	13.4	22	6.7	26	7.9	329	1.99	1.278
Learning from or developing multimedia objects	122	37.3	51	15.6	69	21.1	43	13.1	42	12.8	327	2.49	1.427

\*Range: 1=strongly disagree to 5=strongly agree.

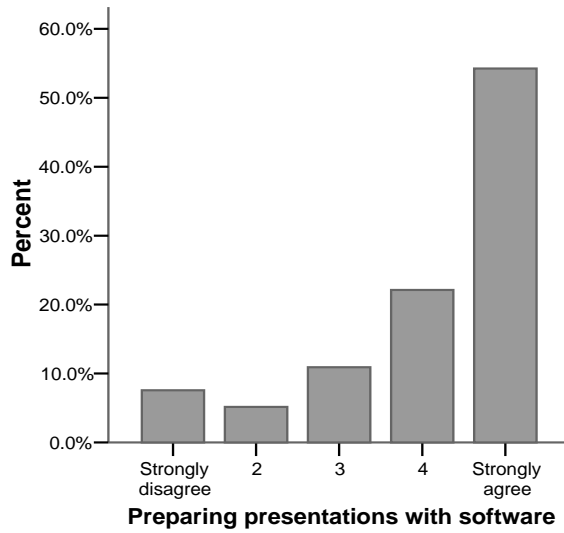
**Graph 28**



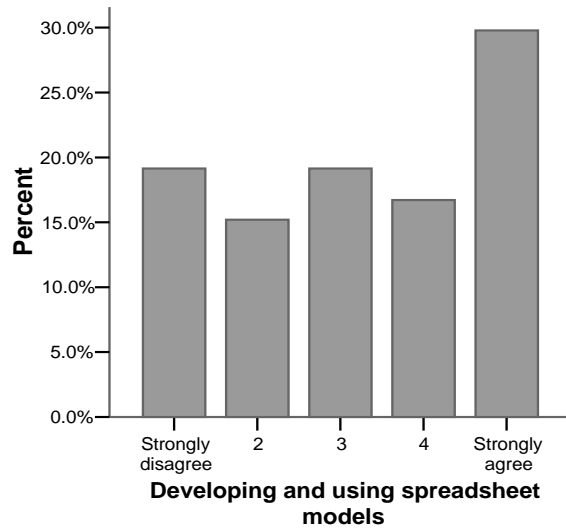
**Graph 29**



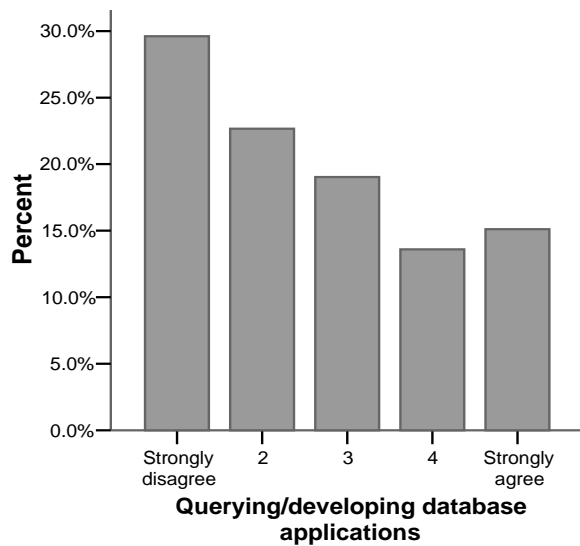
**Graph 30**



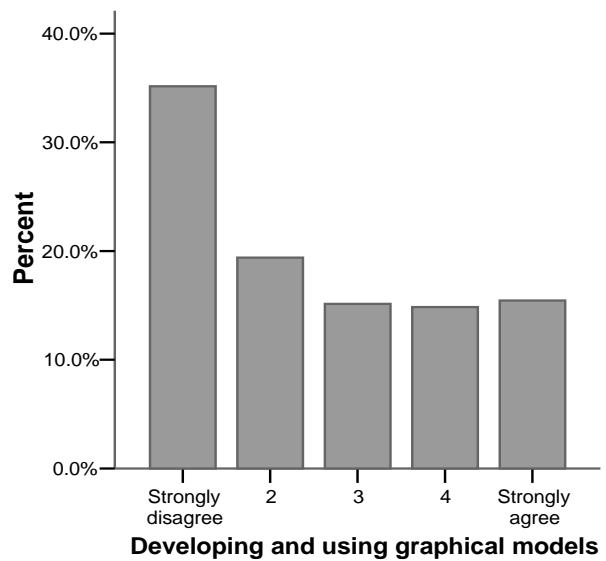
**Graph 31**



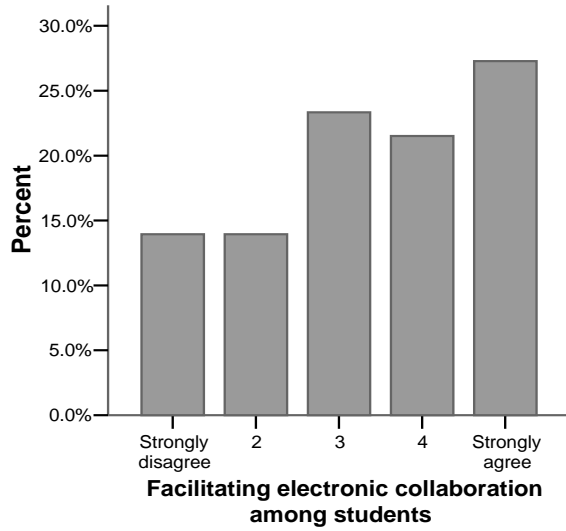
**Graph 32**



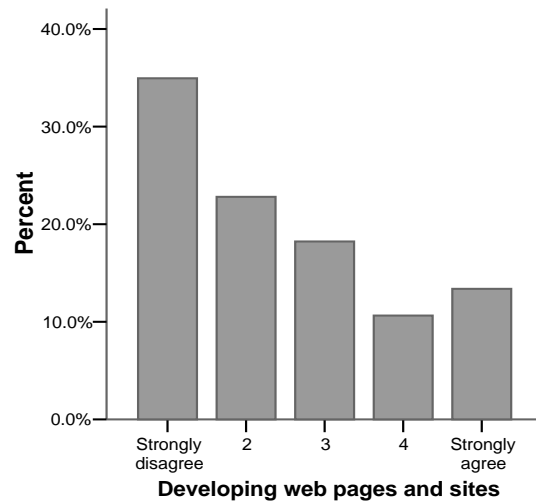
**Graph 33**



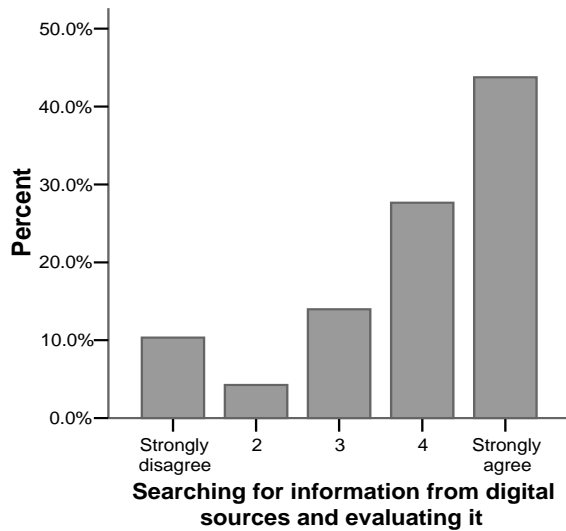
**Graph 34**



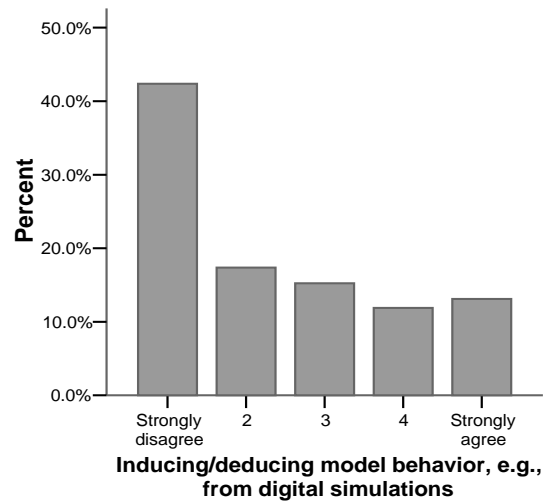
**Graph 35**



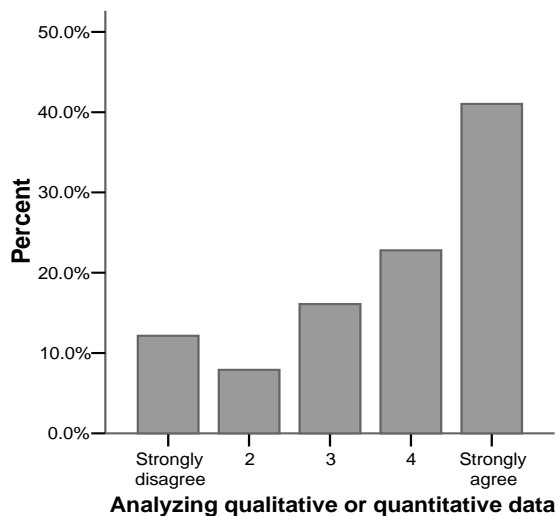
**Graph 36**



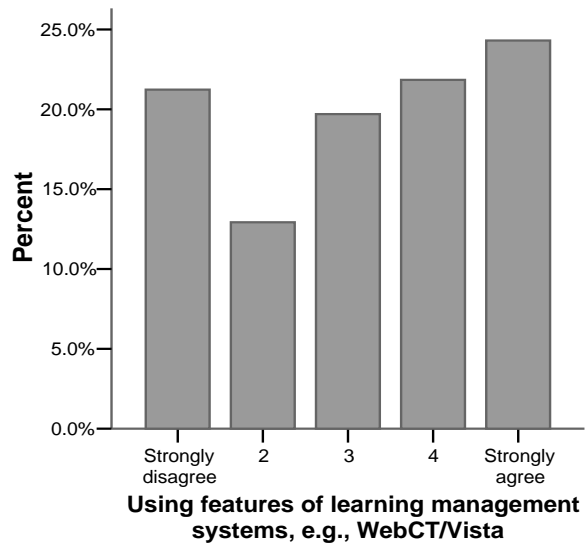
**Graph 37**



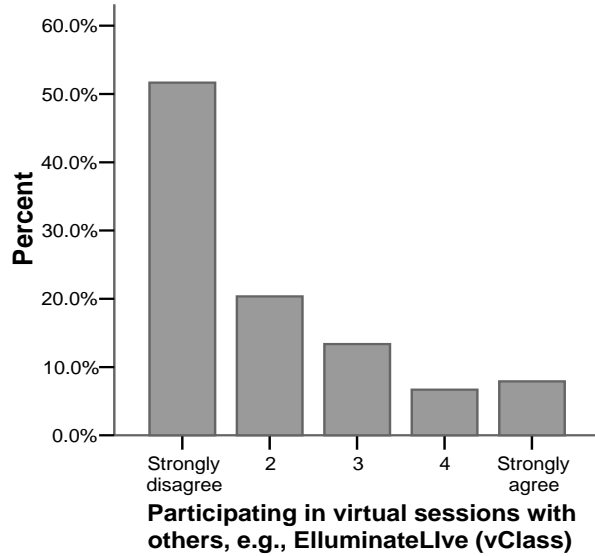
**Graph 38**



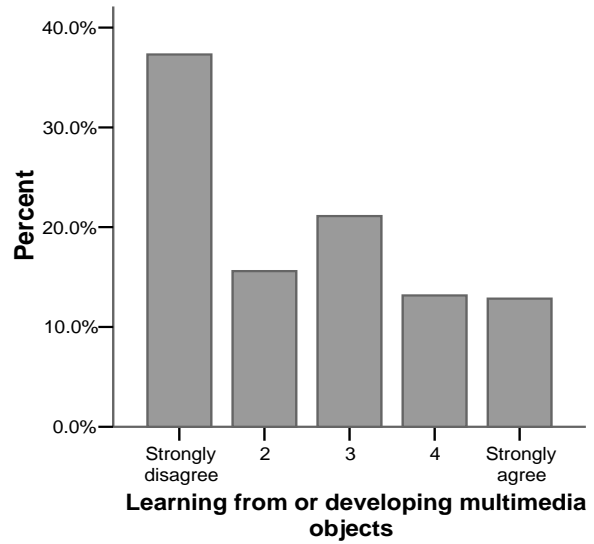
**Graph 39**



**Graph 40**



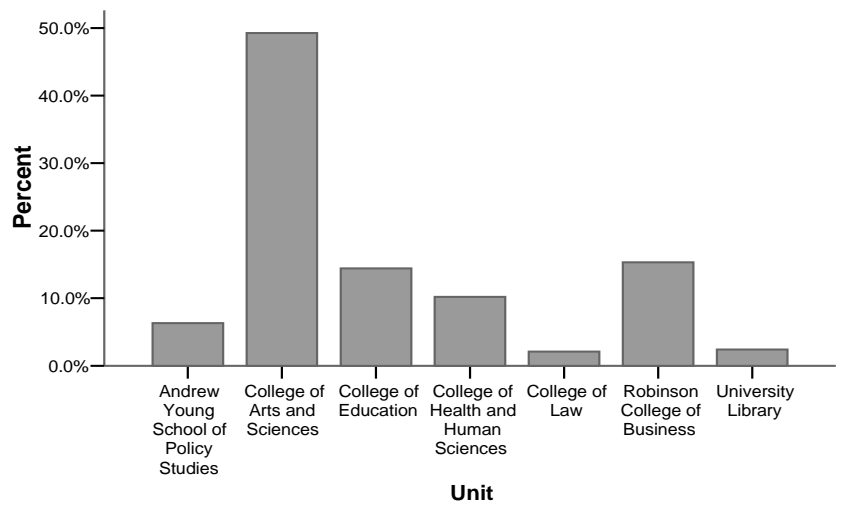
**Graph 41**



**Table 4**

Unit		
Andrew Young School of Policy Studies	N	21
	%	6.3
College of Arts and Sciences	N	164
	%	49.2
College of Education	N	48
	%	14.4
College of Health and Human Sciences	N	34
	%	10.2
College of Law	N	7
	%	2.1
Robinson College of Business	N	51
	%	15.3
University Library	N	8
	%	2.4
Total	N	333
	%	100.0

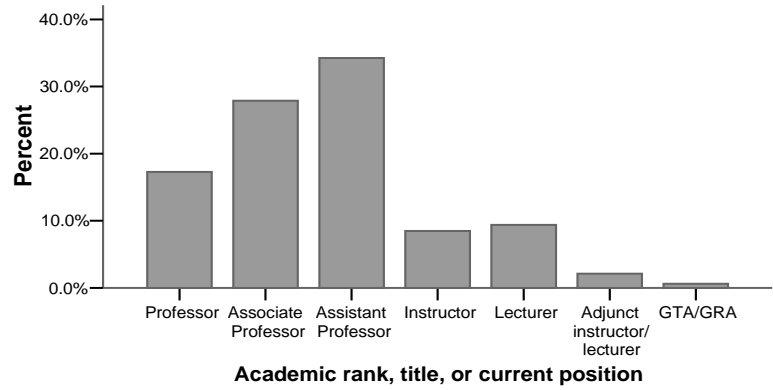
**Graph 42**



**Table 5**

<b>Academic rank, title, or current position</b>		
Professor	N	57
	%	17.3
Associate Professor	N	92
	%	27.9
Assistant Professor	N	113
	%	34.2
Instructor	N	28
	%	8.5
Lecturer	N	31
	%	9.4
Adjunct instructor/lecturer	N	7
	%	2.1
GTA/GRA	N	2
	%	.6
Total	N	330
	%	100.0

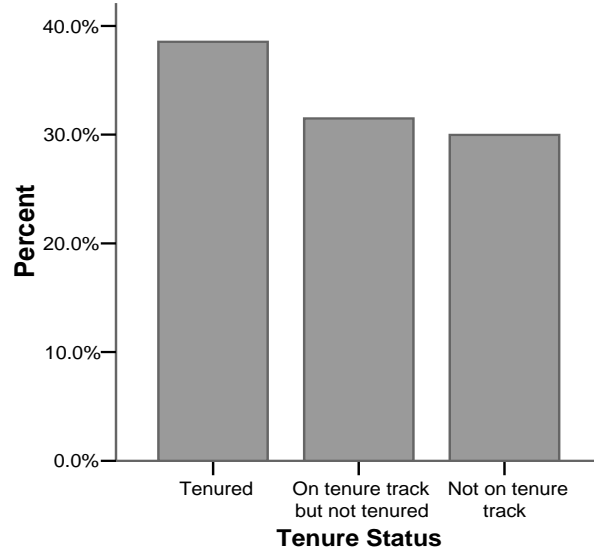
**Graph 43**



**Table 6**

<b>Tenure Status</b>		
Tenured	N	126
	%	38.5
On tenure track but not tenured	N	103
	%	31.5
Not on tenure track	N	98
	%	30.0
Total	N	327
	%	100.0

**Graph 44**



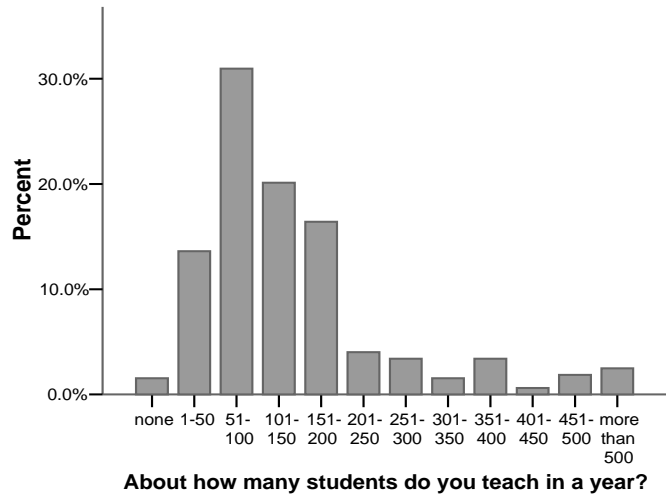
**Table 7**

<b>Employment</b>		
Full-time	N	321
	%	97.0
Part-time	N	10
	%	3.0
Total	N	331
	%	100.0

**Table 8**

About how many students do you teach in a year?	N	%
none	5	1.5
1-50	44	13.6
51-100	100	31.0
101-150	65	20.1
151-200	53	16.4
201-250	13	4.0
251-300	11	3.4
301-350	5	1.5
351-400	11	3.4
401-450	2	.6
451-500	6	1.9
more than 500	8	2.5
<b>Total</b>	<b>323</b>	<b>100.0</b>
<b>Mean</b>	<b>158.63</b>	

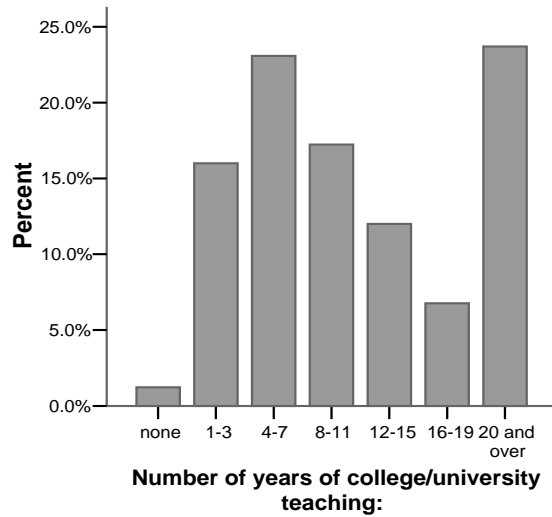
**Graph 45**



**Table 9**

Number of years of college/university teaching:	N	%
none	4	1.2
1-3	52	16.0
4-7	75	23.1
8-11	56	17.2
12-15	39	12.0
16-19	22	6.8
20 and over	77	23.7
<b>Total</b>	<b>325</b>	<b>100.0</b>
<b>Mean</b>	<b>11.91</b>	

**Graph 46**



**Means and Standard Deviations – All Units**

**If you were teaching in classrooms with wireless connectivity and every student had use of a laptop in the classroom, how likely is it that you would have students learning or being assessed in the following ways?**

**Table 10**

	Andrew Young School of Policy Studies		College of Arts and Sciences		College of Education		College of Health and Human Sciences		College of Law		Robinson College of Business		University Library	
	M	SD	M	SD	M	SD	M	SD	M	SD	M	SD	M	SD
Learning from or developing multimedia objects	2.55	1.638	3.20	1.674	3.62	1.483	3.10	1.611	1.86	1.464	2.89	1.567	4.14	.900
Using a word processor to write or revise text	3.20	1.673	3.50	1.597	4.06	1.342	4.03	1.307	3.86	1.464	3.39	1.550	3.50	1.512
Preparing presentations with software	3.25	1.650	3.65	1.568	4.07	1.304	4.06	1.390	2.43	1.813	3.61	1.412	3.50	1.773
Developing and using spreadsheet models	3.10	1.651	2.38	1.477	3.15	1.545	2.39	1.315	1.00	.000	3.78	1.447	2.29	1.704
Querying/developing database applications	2.05	1.471	2.50	1.415	3.10	1.447	3.04	1.427	1.00	.000	2.79	1.444	4.29	.951
Developing and using graphical models	2.42	1.610	2.72	1.591	3.29	1.486	2.54	1.208	1.29	.756	3.19	1.439	1.71	.951
Collaborating electronically with other students	2.90	1.586	3.43	1.516	3.91	1.427	3.87	1.338	2.43	1.618	3.60	1.325	3.50	1.604
Developing web pages and sites	2.16	1.425	2.79	1.560	3.30	1.567	2.43	1.136	1.57	1.134	2.38	1.527	2.86	1.676
Searching for information from digital sources and evaluating it	3.21	1.475	3.75	1.471	4.21	1.284	3.86	1.356	3.43	1.718	4.02	1.301	5.00	.000
Inducing/deducing model behavior, e.g. from digital situations	2.42	1.710	2.29	1.436	3.05	1.467	2.28	1.251	1.00	.000	2.58	1.357	3.00	1.095
Analyzing qualitative or quantitative data	3.75	1.251	3.35	1.612	3.50	1.596	3.48	1.411	1.86	1.069	4.06	1.278	2.83	1.602
Using features of learning management systems, e.g., WebCT/Vista	3.90	1.483	3.49	1.518	3.83	1.253	4.25	1.218	1.71	1.496	3.59	1.499	4.43	1.512
Participating in virtual sessions with others, e.g., ElluminateLive (vClass)	2.00	1.333	2.58	1.499	2.70	1.372	3.06	1.340	1.00	.000	2.74	1.482	3.00	1.604
Sending and receiving files through email	3.15	1.663	3.87	1.485	4.23	1.306	4.12	1.476	3.29	1.890	3.81	1.468	4.13	1.458

\*Range: 1=not at all likely to 5=very likely

**Means and Standard Deviations – All Units**

**If you were teaching in classrooms with wireless connectivity and every student had use of a laptop in the classroom, how likely is it that you would have students learning or being assessed with the following applications in the classroom?**

**Table 11**

	Andrew Young School of Policy Studies		College of Arts and Sciences		College of Education		College of Health and Human Sciences		College of Law		Robinson College of Business		University Library	
	M	SD	M	SD	M	SD	M	SD	M	SD	M	SD	M	SD
Writing/presentation software, e.g., Word/PowerPoint	3.10	1.609	3.81	1.494	4.13	1.276	4.22	1.184	2.29	1.704	3.71	1.500	3.25	1.753
Spreadsheet programs, e.g., Excel	3.40	1.603	2.65	1.567	3.02	1.525	2.78	1.423	1.00	.000	3.78	1.433	3.14	1.676
Database systems, e.g., Access, Oracle	1.68	1.157	1.91	1.170	2.55	1.431	2.59	1.402	1.14	.378	2.17	1.403	2.83	1.329
Statistical packages, e.g., SPSS, SAS	3.11	1.663	2.31	1.508	3.18	1.632	3.11	1.548	1.00	.000	2.72	1.587	1.80	1.095
Bibliographic software, e.g., Endnote	2.16	1.302	2.72	1.542	3.32	1.475	3.07	1.337	1.43	1.134	2.09	1.299	4.38	.916
Email	2.80	1.609	3.71	1.519	4.00	1.523	4.13	1.408	1.67	1.211	3.35	1.578	3.87	1.458
Listserve or discussion boards	2.29	1.617	3.35	1.554	3.85	1.333	4.03	1.470	3.00	1.732	3.00	1.429	3.63	1.768
Internet	3.33	1.528	4.18	1.329	4.26	1.273	4.63	.907	2.83	2.041	4.37	.866	5.00	.000
Learning management systems, e.g., WebCT/Vista	3.48	1.662	3.38	1.606	3.91	1.273	4.12	1.244	1.71	1.496	3.42	1.528	4.38	1.408
Website development tools, e.g., Dreamweaver, Java	1.75	1.209	2.47	1.505	3.07	1.502	2.27	1.151	1.43	1.134	1.91	1.297	3.00	1.732
Desktop publishing	1.80	1.196	2.37	1.422	3.20	1.534	2.48	1.051	1.43	1.134	1.83	1.291	2.14	1.215
Graphical or multimedia software	2.30	1.559	2.87	1.538	3.26	1.449	2.56	1.251	1.29	.756	2.34	1.536	2.71	1.604
Virtual classroom systems, e.g., ElluminateLive (vClass)	1.53	.841	2.28	1.447	2.65	1.478	2.69	1.257	1.29	.756	2.16	1.461	2.57	1.512

\*Range: 1=not at all likely to 5=very likely

## Means and Standard Deviations – All Units

I have the necessary technical skills to utilize laptops/wireless technology for the following student learning or assessment tasks in my classrooms.

**Table 12**

	Andrew Young School of Policy Studies		College of Arts and Sciences		College of Education		College of Health and Human Sciences		College of Law		Robinson College of Business		University Library	
	M	SD	M	SD	M	SD	M	SD	M	SD	M	SD	M	SD
Sending and receiving files through email	4.62	.805	4.37	1.078	4.66	.760	4.50	.896	5.00	.000	4.76	.591	4.63	.518
Using a word processor to write and revise text	4.76	.539	4.46	1.061	4.72	.713	4.79	.479	5.00	.000	4.68	.868	4.50	.535
Preparing presentations with software	4.38	.921	3.83	1.366	4.40	.993	4.52	.939	3.00	1.915	4.52	.814	4.25	1.035
Developing and using spreadsheet models	4.05	1.322	2.96	1.537	3.32	1.446	2.76	1.394	2.14	1.464	4.22	.910	2.75	1.389
Querying/developing database applications	2.76	1.546	2.42	1.426	3.00	1.430	2.71	1.315	2.14	1.464	2.76	1.364	3.13	1.356
Developing and using graphical models	2.86	1.682	2.40	1.468	2.89	1.479	2.29	1.268	1.71	1.496	3.14	1.429	1.63	.744
Facilitating electronic collaboration among students	3.33	1.528	3.23	1.380	3.66	1.340	3.44	1.353	2.86	1.574	3.44	1.296	3.50	1.512
Developing web pages and sites	2.14	1.195	2.46	1.436	2.83	1.582	1.82	.727	2.29	1.604	2.52	1.403	3.50	1.069
Searching for information from digital sources and evaluating it	4.38	.740	3.88	1.343	4.21	.954	3.12	1.533	3.86	1.464	3.98	1.204	4.63	.744
Inducing/deducing model behavior, e.g., from digital simulations	2.95	1.638	2.15	1.370	2.77	1.549	2.09	1.264	1.57	1.512	2.80	1.485	2.13	1.356
Analyzing qualitative or quantitative data	4.40	.995	3.53	1.525	3.98	1.310	3.68	1.093	2.14	1.676	4.24	.894	2.88	.991
Using features of learning management systems, e.g., WebCT/Vista	3.86	1.315	2.96	1.503	3.24	1.417	3.59	1.282	2.14	1.952	3.20	1.369	3.63	1.408
Participating in virtual sessions with others, e.g., ElluminateLive (vClass)	1.76	1.221	1.82	1.193	2.49	1.487	1.94	1.071	1.57	1.512	2.18	1.333	2.63	1.408
Learning from or developing multimedia objects	1.95	1.284	2.46	1.449	3.09	1.442	2.30	1.237	2.00	1.528	2.37	1.395	3.00	1.414

\*Range: 1=strongly disagree to 5=strongly agree