

**SURVEY OF RECENT GRADUATES
RECIPIENTS OF UNDERGRADUATE DEGREES
SUMMER 2004**

This survey is administered each semester to all recipients of undergraduate degrees.

N = 290

Response rate = 36.7 percent

Respondent demographics compare favorably with Summer 2004 recipients of undergraduate degrees.

Table 1

	Very weak competency		2		3		4		Very strong competency		Mean*	SD
	N	%	N	%	N	%	N	%	N	%		
Ability to write clearly and effectively (entering)	4	1.4	24	8.5	77	27.1	99	34.9	80	28.2	3.79	.994
Ability to write clearly and effectively (exiting)	1	.4	2	.7	12	4.2	105	37.1	163	57.6	4.52	.634
Ability to speak clearly and effectively (entering)	4	1.4	35	12.3	80	28.2	89	31.3	76	26.8	3.68	1.037
Ability to speak clearly and effectively (exiting)	0	.0	4	1.4	19	6.7	114	40.3	146	51.6	4.43	.669
Organize and interpret data appropriately (entering)	4	1.4	38	13.5	89	31.7	96	34.2	54	19.2	3.55	.993
Organize and interpret data appropriately (exiting)	0	.0	3	1.1	11	3.9	112	40.1	153	54.8	4.50	.606
Ability to locate and organize information from multiple sources (entering)	5	1.8	33	11.7	95	33.7	98	34.8	51	18.1	3.54	.974
Ability to locate and organize information from multiple sources (exiting)	2	.7	0	.0	13	4.7	100	35.8	164	58.8	4.53	.623
Effectively use technology (entering)	9	3.2	32	11.3	70	24.6	97	34.2	76	26.8	3.69	1.079
Effectively use technology (exiting)	0	.0	4	1.4	10	3.5	104	36.7	165	58.3	4.53	.622
Work effectively with others (entering)	3	1.1	17	6.0	89	31.3	103	36.3	72	25.4	3.77	.924
Work effectively with others (exiting)	1	.4	3	1.1	19	6.7	104	36.9	155	55.0	4.46	.683
Work effectively on your own (entering)	4	1.4	13	4.6	54	19.2	105	37.4	105	37.4	4.04	.939
Work effectively on your own (exiting)	2	.7	0	.0	12	4.3	84	29.9	183	65.1	4.61	.603

Mean range: 1=very weak competency to 5=very strong competency

*p<.01 (all pairs)

Table 2

	Very weak competency		2		3		4		Very strong competency		Mean*	SD
	N	%	N	%	N	%	N	%	N	%		
Apply scientific reasoning in problem-solving (entering)	2	.7	44	15.7	118	42.1	77	27.5	39	13.9	3.38	.925
Apply scientific reasoning in problem-solving (exiting)	1	.4	5	1.8	39	14.1	119	43.0	113	40.8	4.23	.778
Ability to integrate new information with past knowledge (entering)	3	1.1	22	7.8	107	38.1	102	36.3	47	16.7	3.59	.889
Ability to integrate new information with past knowledge (exiting)	1	.4	2	.7	18	6.4	119	42.3	141	50.2	4.42	.665
Ability to analyze quantitative problems (entering)	6	2.1	33	11.6	131	46.1	76	26.8	38	13.4	3.37	.928
Ability to analyze quantitative problems (exiting)	0	.0	4	1.4	44	15.6	130	46.1	104	36.9	4.19	.741
Ability to analyze problems from different points of view (entering)	4	1.4	25	8.8	117	41.2	96	33.8	42	14.8	3.50	.895
Ability to analyze problems from different points of view (exiting)	2	.7	0	.0	19	6.8	119	42.3	141	50.2	4.43	.653
Ability to set goals, prioritize tasks, and meet deadlines (entering)	5	1.8	28	9.9	95	33.5	93	32.7	63	22.2	3.62	.987
Ability to set goals, prioritize tasks, and meet deadlines (exiting)	0	.0	3	1.1	22	7.8	86	30.5	171	60.6	4.52	.667
Get along with people of other racial/ethnic backgrounds (entering)	4	1.4	10	3.5	47	16.5	88	31.0	135	47.5	4.19	.936
Get along with people of other racial/ethnic backgrounds (exiting)	2	.7	3	1.1	19	6.7	56	19.9	202	71.6	4.62	.694
Understanding of values and ethical standards (entering)	5	1.8	12	4.2	43	15.2	103	36.4	120	42.4	4.13	.945
Understanding of values and ethical standards (exiting)	2	.7	1	.4	6	2.1	74	26.2	199	70.6	4.67	.574

Mean range: 1=very weak competency to 5=very strong competency

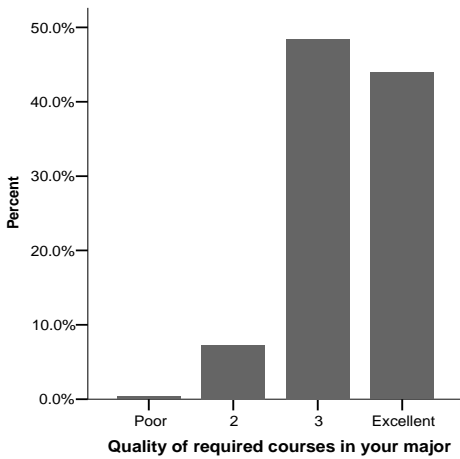
* $p < .01$ (all pairs)

Table 3

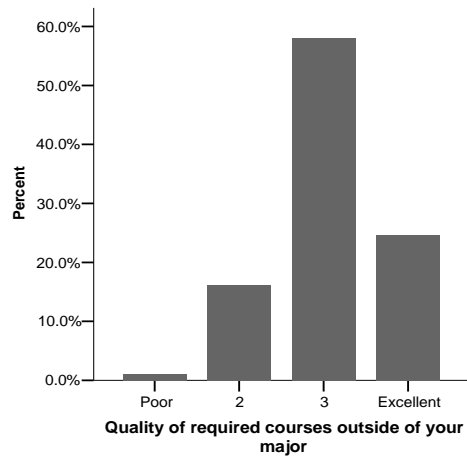
	Poor		2		3		Excellent		Not applicable		Mean*	SD
	N	%	N	%	N	%	N	%	N	%		
Quality of required courses in your major	1	.3	21	7.3	140	48.4	127	43.9	0	.0	3.36	.631
Quality of required courses outside of your major	3	1.0	46	16.0	165	57.3	70	24.3	4	1.4	3.06	.670
Quality of elected courses	0	.0	33	11.4	165	57.1	88	30.4	3	1.0	3.19	.622
Availability of courses in your major program	21	7.4	64	22.5	125	43.9	75	26.3	0	.0	2.89	.879
Quality of instruction in your major program	2	.7	36	12.5	117	40.6	131	45.5	2	.7	3.32	.716
Interaction with faculty in your major program	12	4.2	45	15.8	115	40.5	112	39.4	0	.0	3.15	.837
Scholarly competency of faculty in your major program	3	1.0	18	6.3	106	36.9	158	55.1	2	.7	3.47	.663
Academic support services	14	4.9	59	20.8	97	34.3	41	14.5	72	25.4	2.78	.834
Academic advising in your major department	30	10.5	58	20.2	89	31.0	96	33.4	14	4.9	2.92	1.000
Academic advising in your college	32	11.3	63	22.2	95	33.5	76	26.8	18	6.3	2.81	.985
Academic advising from Student Advisement Center	36	12.5	55	19.2	86	30.0	36	12.5	74	25.8	2.57	.962

*Mean range: 1=poor to 5=excellent

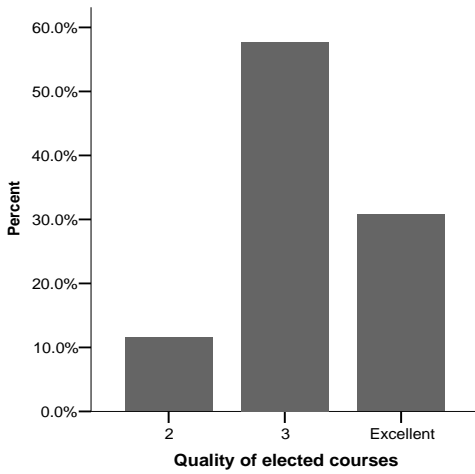
Graph 1



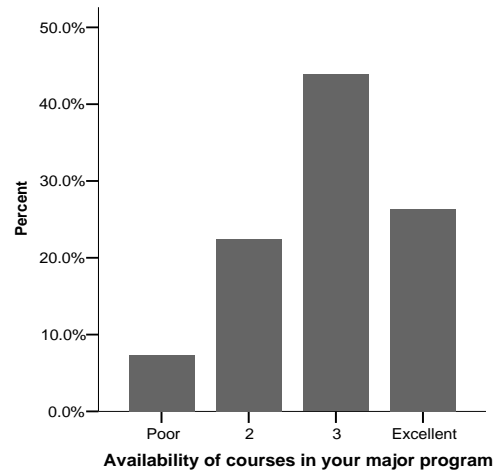
Graph 2



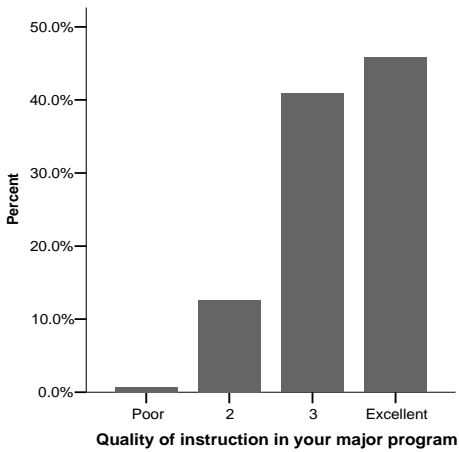
Graph 3



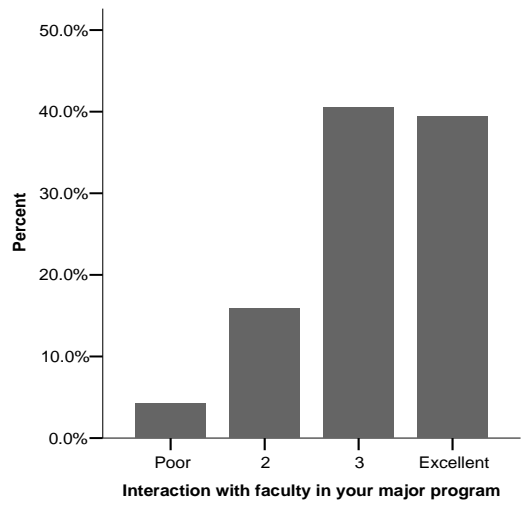
Graph 4



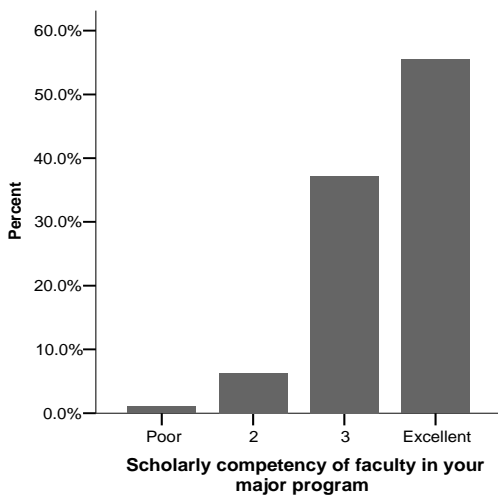
Graph 5



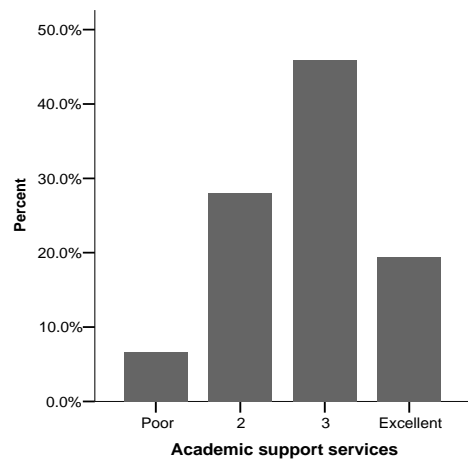
Graph 6



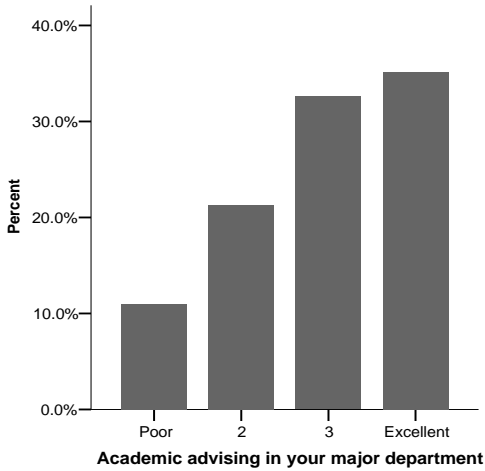
Graph 7



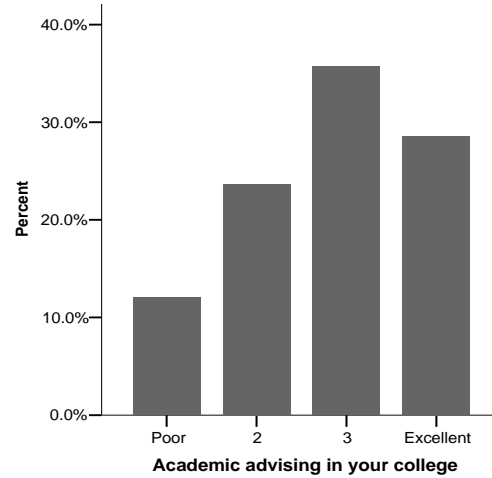
Graph 8



Graph 9



Graph 10



Graph 11

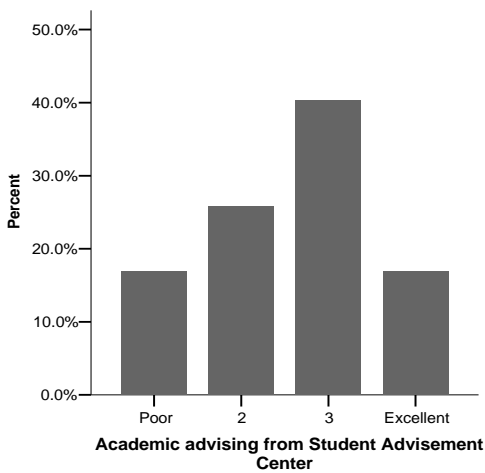
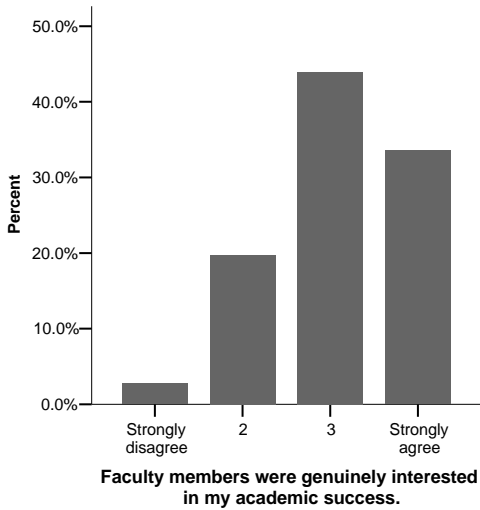


Table 4

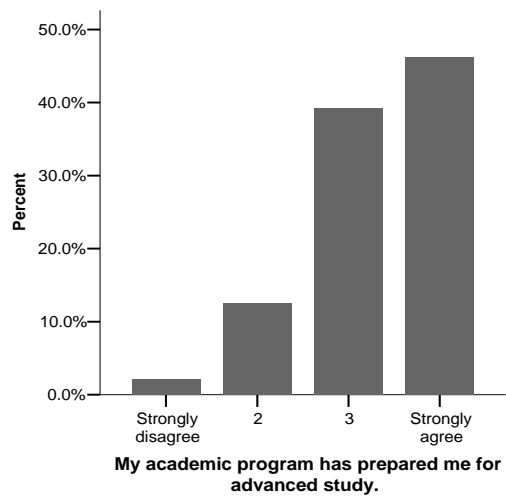
	Strongly disagree		2		3		Strongly agree		Mean*	SD
	N	%	N	%	N	%	N	%		
Faculty members were genuinely interested in my academic success.	8	2.8	57	19.7	127	43.9	97	33.6	3.08	.799
My academic program has prepared me for advanced study.	6	2.1	36	12.5	113	39.2	133	46.2	3.30	.765
My academic program provided good preparation for my career.	17	5.9	50	17.3	104	36.0	118	40.8	3.12	.898
For the courses I took, the instructors stressed high quality work from students.	4	1.4	34	11.8	134	46.5	116	40.3	3.26	.716
I would recommend GSU to a close friend or relative.	13	4.5	26	9.0	89	30.8	161	55.7	3.38	.829

*Mean range: 1=strongly disagree to 5=strongly agree

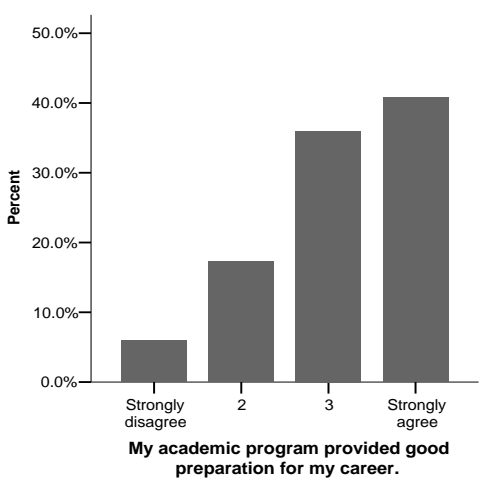
Graph 12



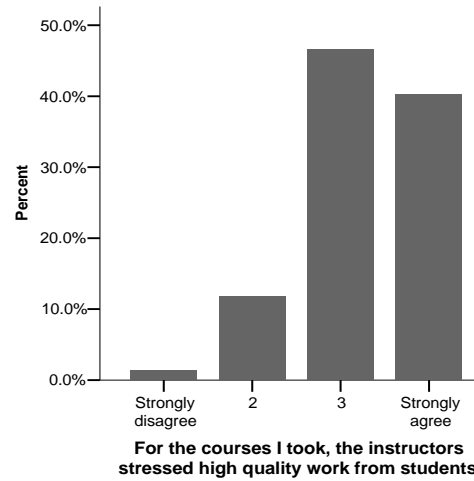
Graph 13



Graph 14



Graph 15



Graph 16

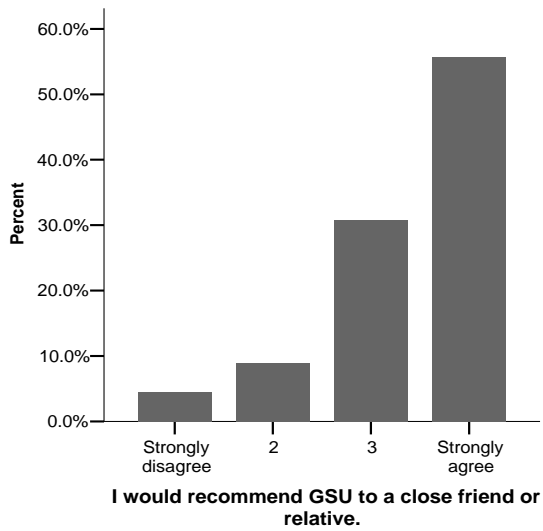
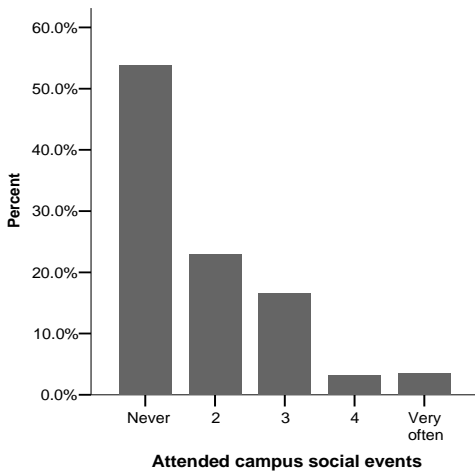


Table 5

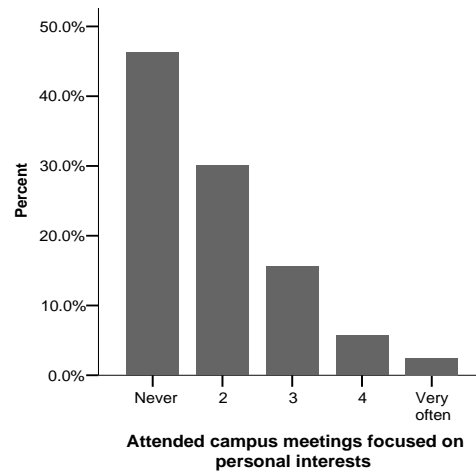
	Never		2		3		4		Very often		Mean*	SD
	N	%	N	%	N	%	N	%	N	%		
Attended campus social events	153	53.9	65	22.9	47	16.5	9	3.2	10	3.5	1.80	1.054
Attended campus meetings focused on personal interests	131	46.3	85	30.0	44	15.5	16	5.7	7	2.5	1.88	1.028
Attended campus meetings focused on professional interests	91	32.2	72	25.4	68	24.0	35	12.4	17	6.0	2.35	1.218
Attended athletic events at GSU	190	67.1	46	16.3	26	9.2	14	4.9	7	2.5	1.59	1.011
Worked with faculty members on activities other than coursework	169	59.7	53	18.7	28	9.9	18	6.4	15	5.3	1.79	1.178
Utilized the Student Recreation Center facilities	69	24.3	52	18.3	51	18.0	46	16.2	66	23.2	2.96	1.501

Mean range: 1=never to 5=very often

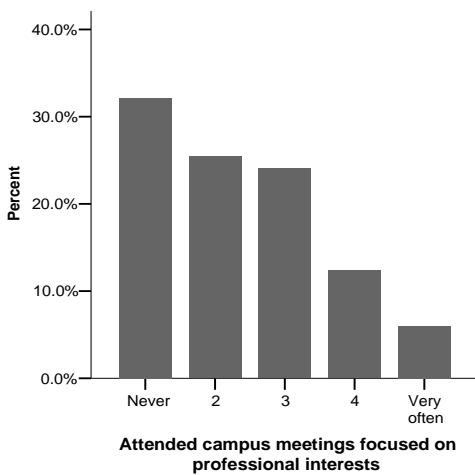
Graph 17



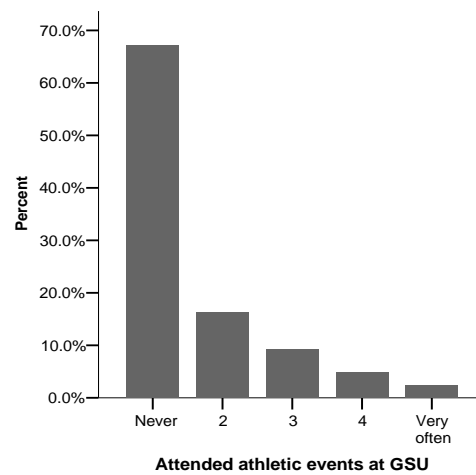
Graph 18



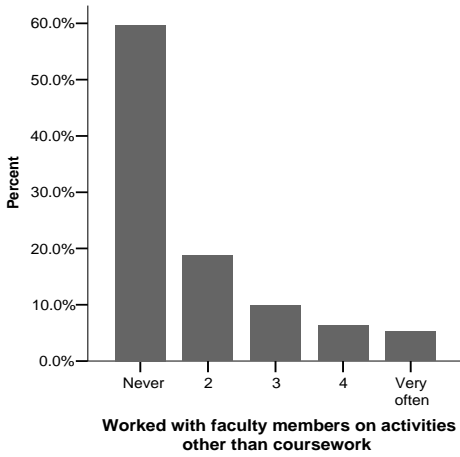
Graph 19



Graph 20



Graph 21



Graph 22

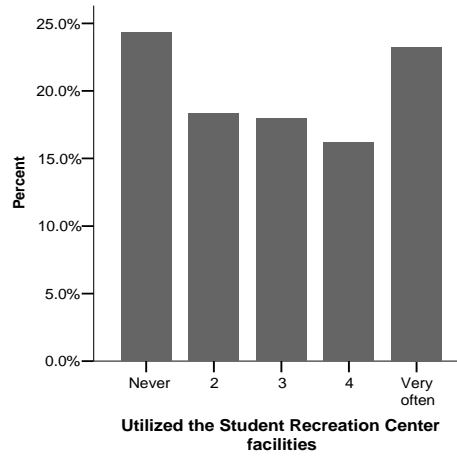


Table 6

		N	%
While enrolled at GSU, did you attend primarily day or night classes?	Day	203	73.3
	Night	74	26.7

Graph 23

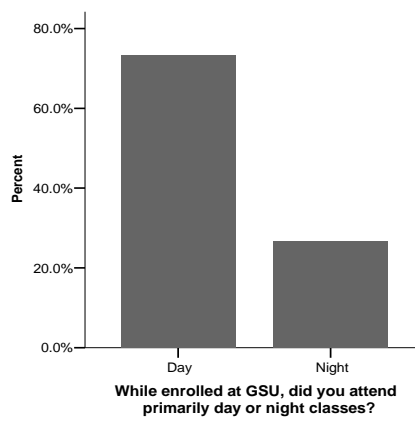


Table 7

		N	%
Did you consider yourself primarily a full-time or part-time student?	Full-time	233	82.0
	Part-time	51	18.0

Graph 24

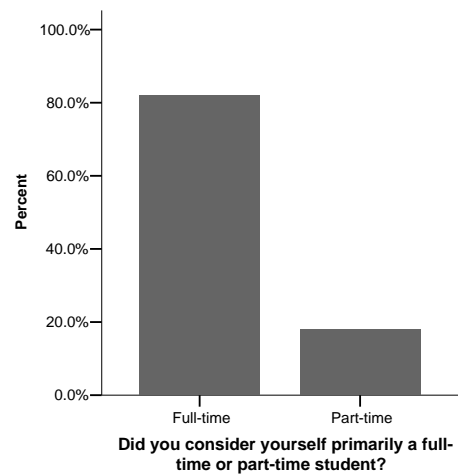


Table 8

Employment	N	%
Employed full-time	149	53.0
Employed part-time	55	19.6
Unemployed and looking for work	61	21.7
Unemployed and not looking for work	16	5.7

Graph 25

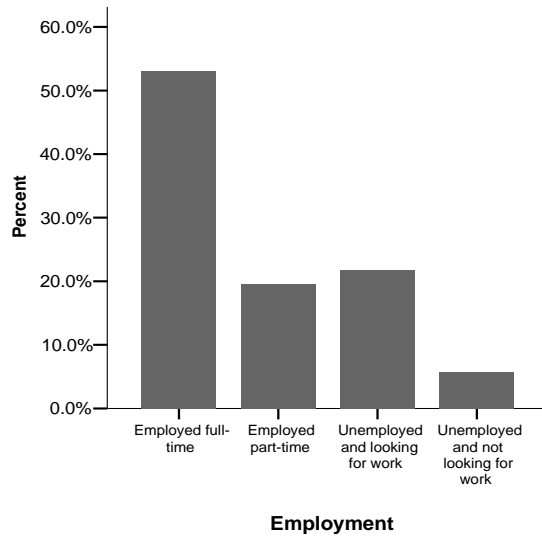


Table 9

Employer	N	%
Not applicable	70	25.3
Accounting/Banking/Finance/Insurance	47	17.0
Agriculture/Forestry/Mining	0	.0
Computer/Systems	7	2.5
Construction	2	.7
Education/Arts/Social Services	23	8.3
Engineering/Architecture	3	1.1
Entertainment/Recreation	11	4.0
Government/Non-Profit	16	5.8
Hospital/Health Services	12	4.3
Legal Services	9	3.2
Manufacturing/Production	6	2.2
Merchandising/Retailing	18	6.5
Military	0	.0
Personal Services	9	3.2
Real Estate	11	4.0
Self-employed	12	4.3
Telecommunications	3	1.1
Travel/Hospitality/Food	17	6.1
Utilities	0	.0
Wholesale Trade	1	.4

Graph 26

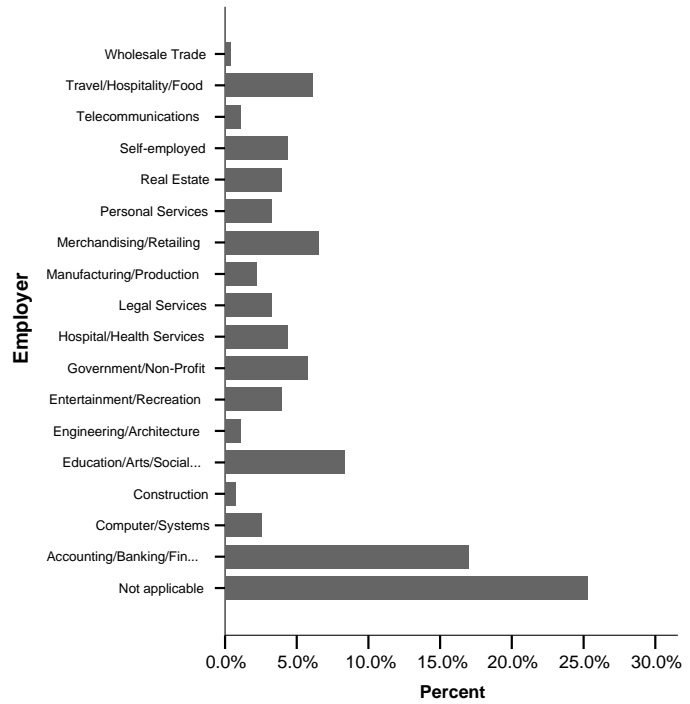


Table 10

		N	%
How closely is this position related to the field you studied at GSU?	Not at all related	72	35.8
	Somewhat related	55	27.4
	Closely related	74	36.8

Graph 27

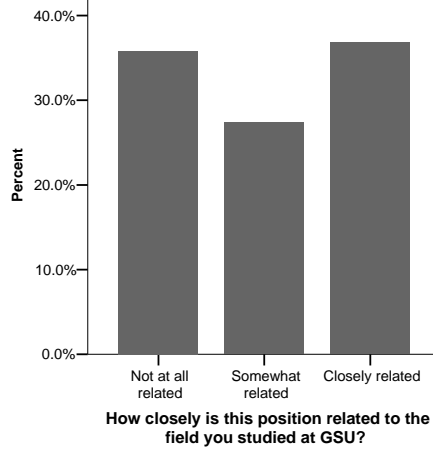


Table 11

Annual salary	N	%
\$19,999 or less	72	32.3
\$20,000 to 29,999	58	26.0
\$30,000 to 39,999	47	21.1
\$40,000 to 49,999	25	11.2
\$50,000 to 59,999	9	4.0
\$60,000 to 69,999	9	4.0
\$70,000 to 79,999	0	.0
\$80,000 or more	3	1.3

Graph 28

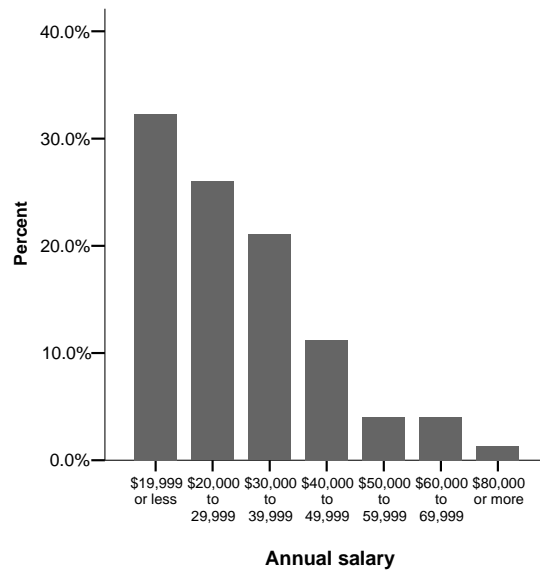


Table 12

College	N	%
Arts and Sciences	144	49.7
Education	7	2.4
Health & Human Sciences	12	4.1
Law	0	.0
Robinson College of Business	116	40.0
Policy Studies	11	3.8

Graph 29

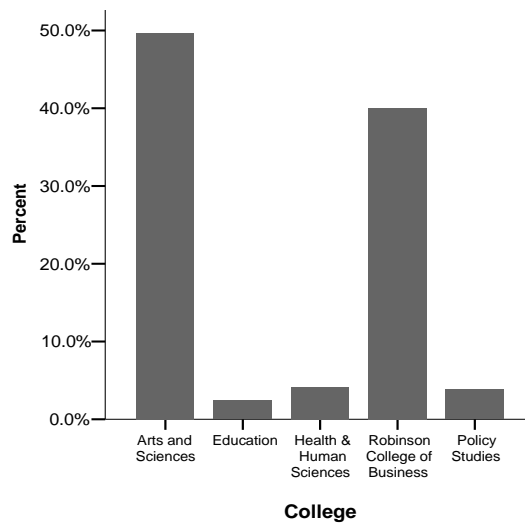


Table 13

Ethnicity	N	%
Asian	32	11.1
Black	103	35.8
Latino	8	2.8
American Indian	2	.7
Mixed	13	4.5
Other	11	3.8
White	119	41.3

Graph 30

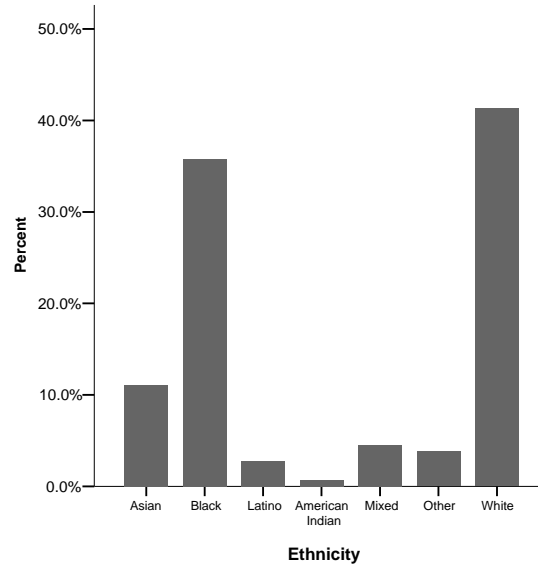


Table 14

Gender	N	%
Female	190	65.5
Male	100	34.5

Graph 31

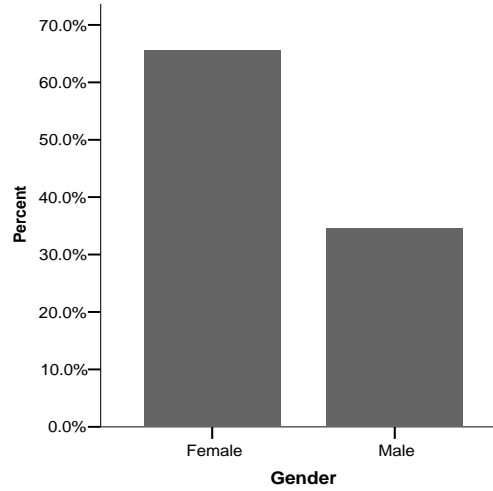


Table 15

GPA	N	%
3.90-4.0	7	2.4
3.7-3.89	22	7.6
3.5-3.69	29	10.0
3.0-3.49	99	34.1
2.5-2.99	97	33.4
2.0-2.49	36	12.4
below 2.0	0	.0
Mean	3.04	

Graph 32

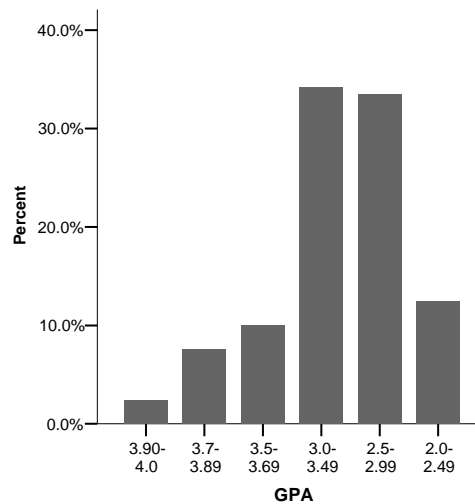


Table 16

	N	%
Transfer student	128	44.1
Not a transfer	162	55.9

Graph 33

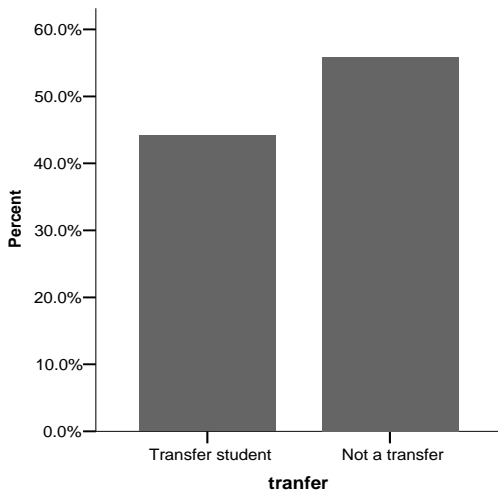


Table 17

Citizenship	N	%
United States Citizen	277	95.5
Non-resident alien	12	4.1
Resident alien	1	.3