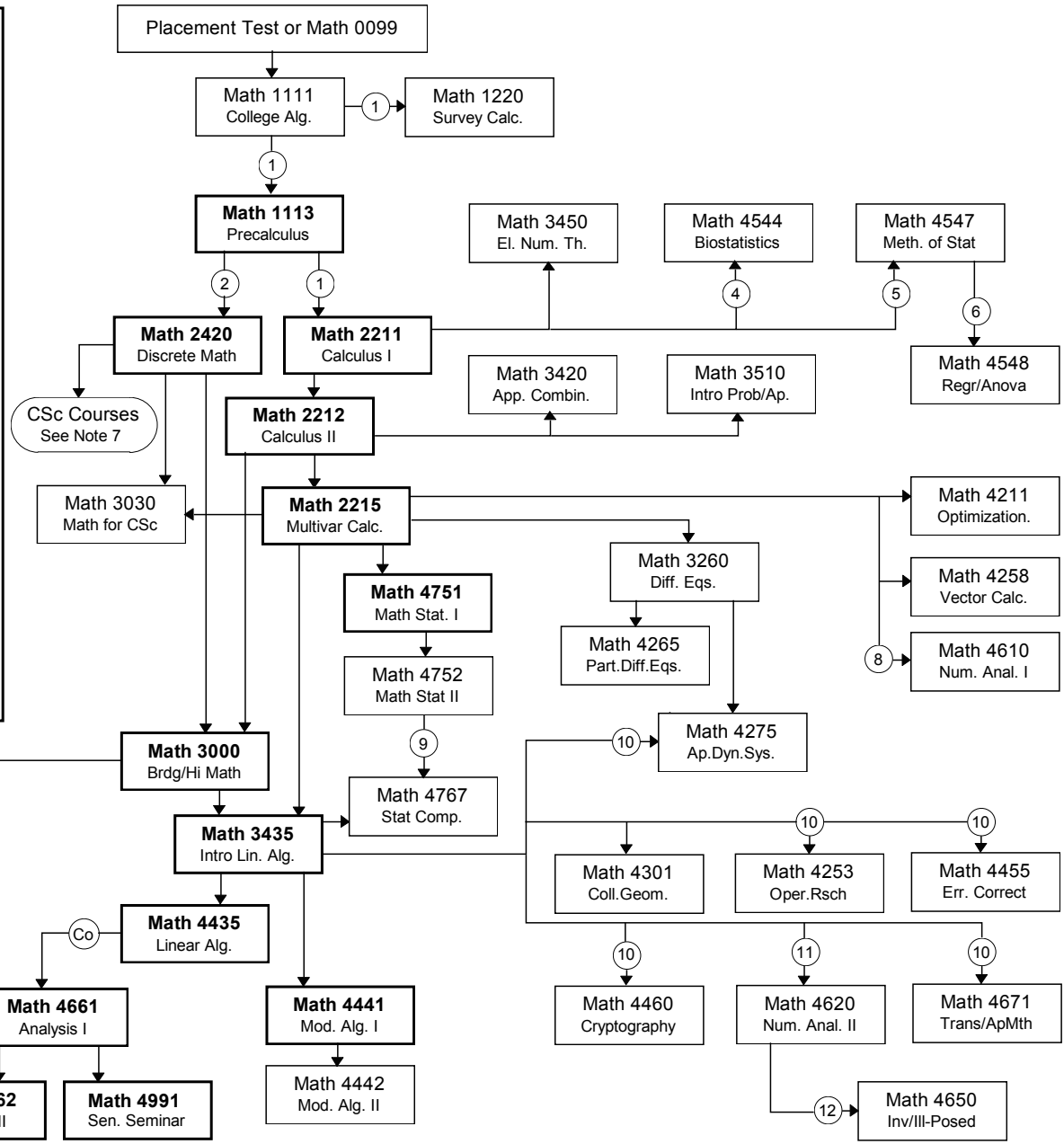
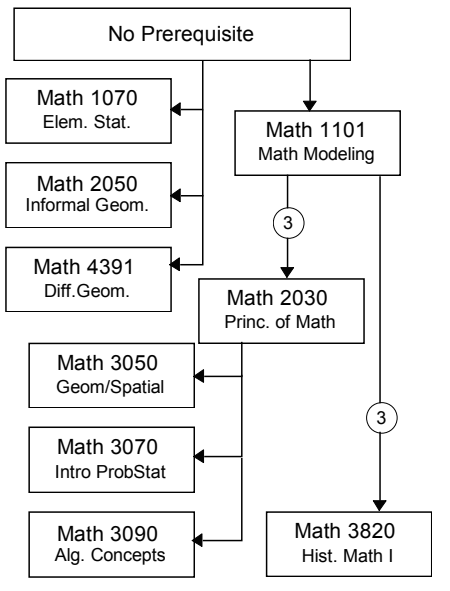


Department of Mathematics and Statistics — Georgia State University — Course Prerequisites

- A prerequisite (indicated by \longrightarrow) must be passed with a grade of "C" or better before the subsequent course can be taken.
- A corequisite (indicated by $\xrightarrow{\text{CO}}$) must be either passed with a grade of "C" before or can be taken at the same time as the subsequent course.
- If more than one course is indicated as a prerequisite for a course, all must be passed with a grade of "C" or better before the course can be taken
- Any exceptions, alternative courses, or additional restrictions (indicated by $\xrightarrow{\#}$) are explained in the notes on the right side of the page.
- Titles listed are abbreviated. See catalog or departmental website for full titles and descriptions.
- Courses in **boldface** are required in the standard B. S. in Mathematics degree and in many of the concentrations; see catalog or departmental website for details. Besides the required Math 3000 and Math 3435, only one additional 3000-level course can apply to the major courses for the degree, excluding Math 3030 and Math 3070.

Courses with Prerequisites Lower than Math 1111

NOTE: The courses below will **NOT** serve as prerequisites for any other math courses.



NOTES

1. Or Placement Test.
2. Or Placement Test; Math 1220 can replace Math 1113.
3. Or Math 1111, or higher level math course.
4. Or Math 1220; also Biol 1107K, Biol 1108K, or equivalent.
5. Or Math 1220.
6. Math 1220 can replace Math 2211; Math 4752 can replace Math 4547.
7. Math 2420 is a prerequisite for CSc 3410 and for some other upper-level CSc courses.
8. And ability to program in a high-level language.
9. And ability to program in a high-level language; Math 4548 can replace Math 4752.
10. Math 3030 (without Math 3000) can replace Math 3435.
11. And ability to program in a high-level language; Math 3030 (without Math 3000) can replace Math 3435.
12. Math 3030 (without Math 3000) can replace Math 3435; Math 4610 can replace Math 4620.