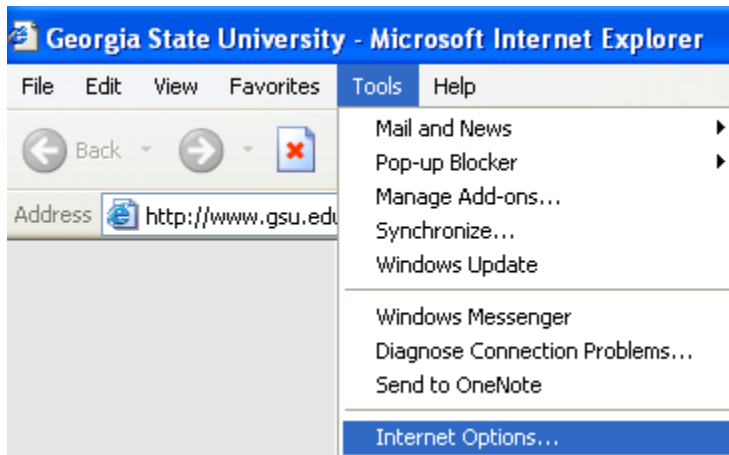

Updating Your Trusted Sites to include all GSU.EDU Websites

Changing security for Internet Explorer 8:

Step 1: On your desktop, open Internet Explorer



Step 2: On the menu, click on **Tools**, Select **Internet Options**

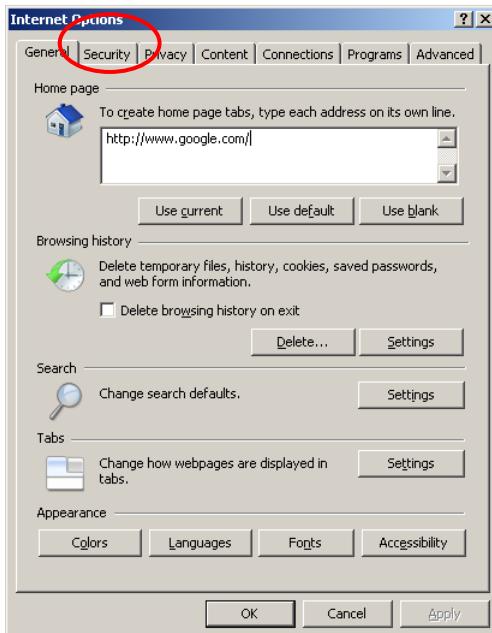


Spectrum Plus 8.9

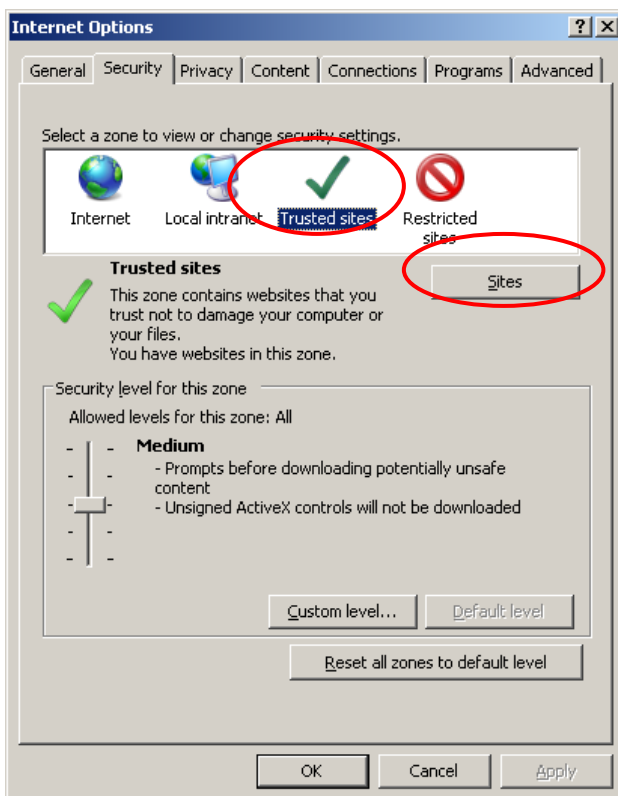
Updating Your Trusted Sites

(Revised 07/03/2009 AS)

Step 3: Click on the **Security** tab.

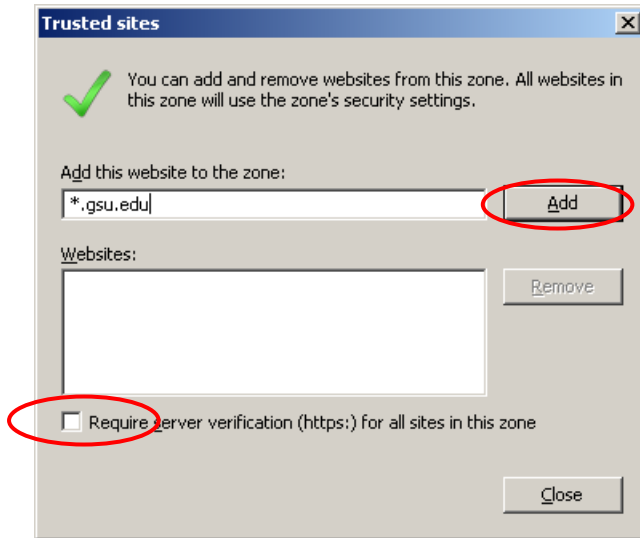


Step 4: Click on **Trusted sites** icon and click on the **Sites** button.



Spectrum Plus 8.9
Updating Your Trusted Sites
(Revised 07/03/2009 AS)

Step 5: Ensure the **Require server verification** box is unchecked.

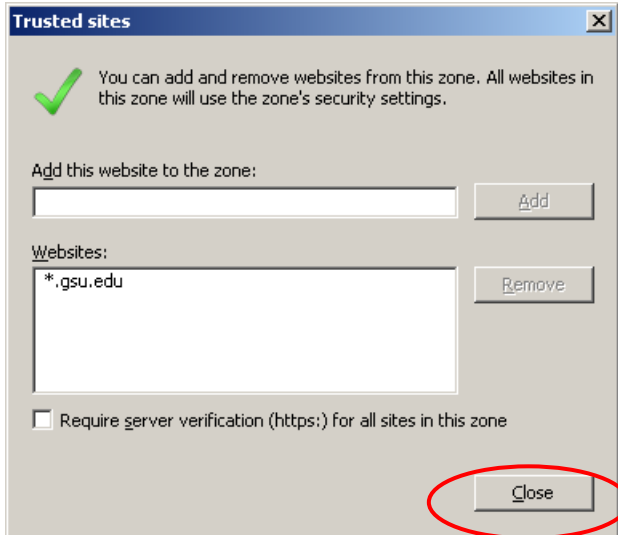


Step 6: In the **Add this website to the zone** box, type **.gsu.edu* and click the **Add** button.

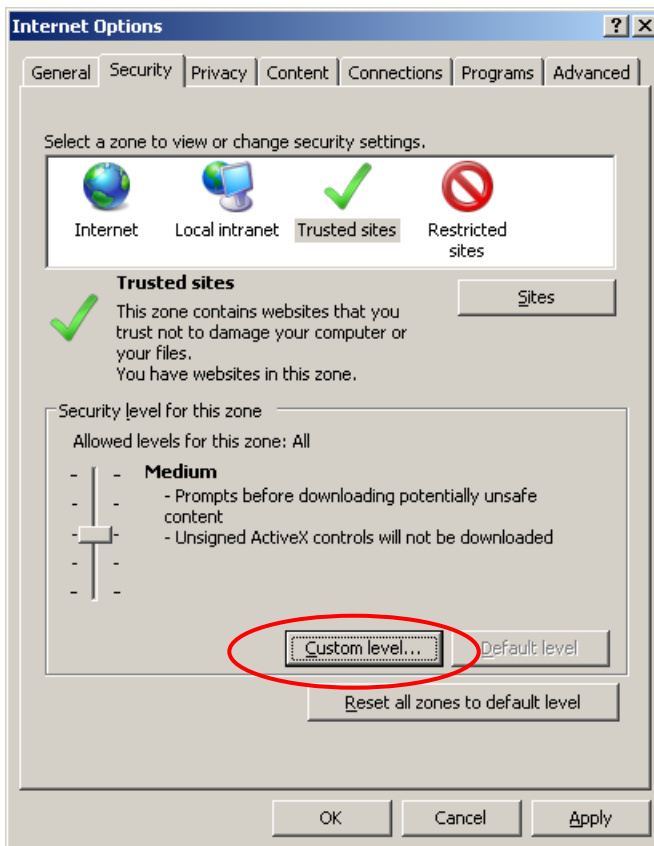
Spectrum Plus 8.9 Updating Your Trusted Sites (Revised 07/03/2009 AS)

After clicking Add, you should see the website added to the bottom box.

Step 7: Press the **Close** button.

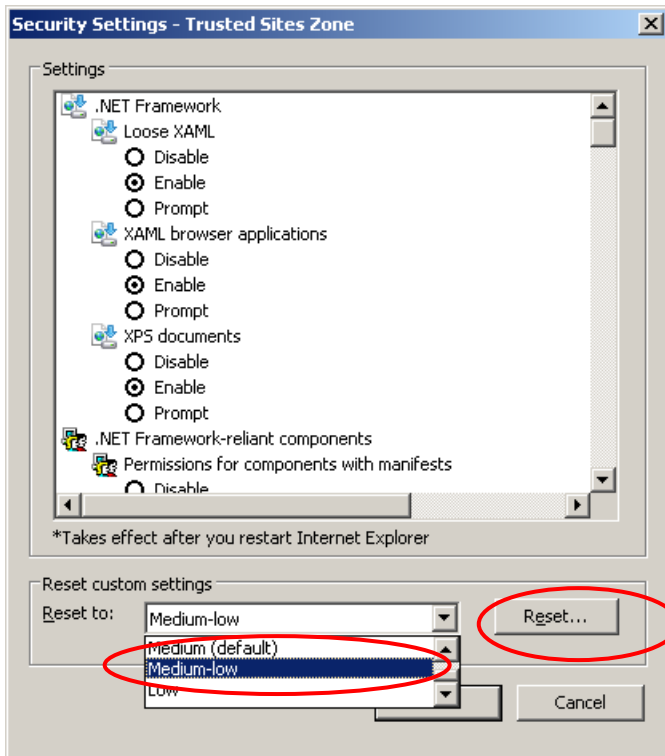


Step 8: Click on the **Custom Level** button.

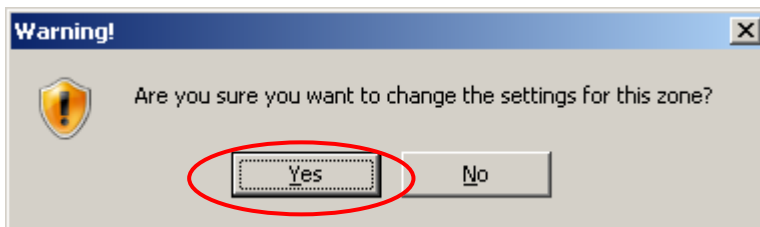


Spectrum Plus 8.9 Updating Your Trusted Sites (Revised 07/03/2009 AS)

Step 9: In the **Reset to** dropdown, select Medium-Low and Press the **Reset...** button.

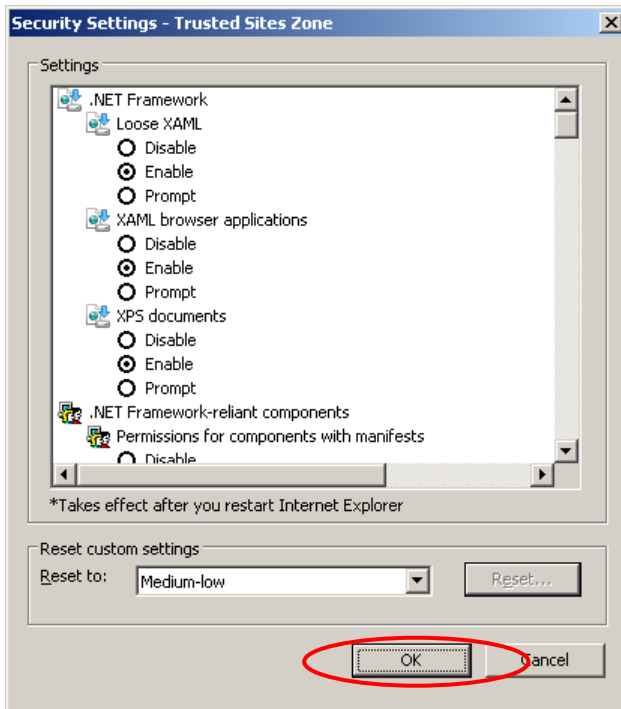


You will receive a Warning, Press the **Yes** button.

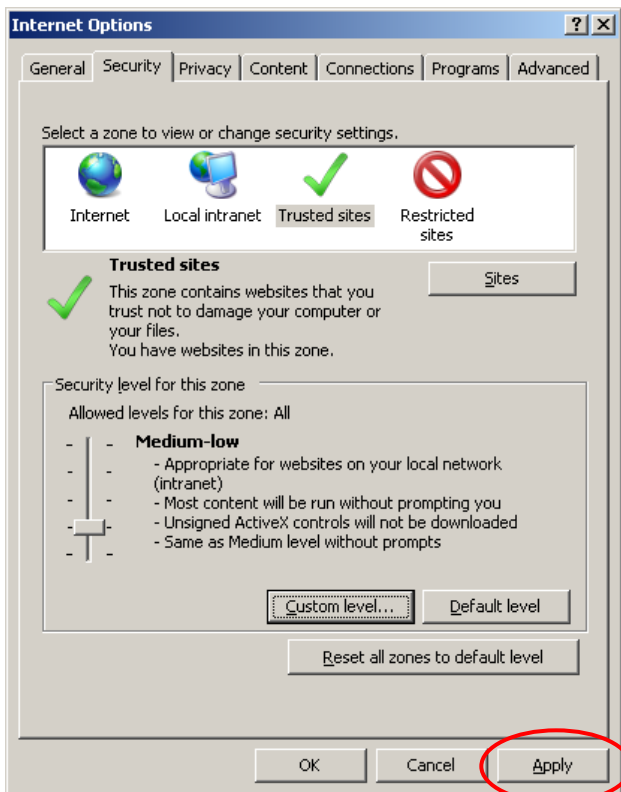


Spectrum Plus 8.9 Updating Your Trusted Sites (Revised 07/03/2009 AS)

Step 10: Press the **OK** button.



Step 11: Press the **Apply** button.



Spectrum Plus 8.9

Updating Your Trusted Sites

(Revised 07/03/2009 AS)

Step 12: Press the **OK** button.

